

**REPORT ON
THE HANDLE OF EX JUGUN IANFU
BY INDONESIA GOVERNMENT
IN COOPERATION WITH ASIAN WOMEN'S FUND (AWF)**



DIRECTORATE OF SOCIAL SERVICES FOR ELDERLY
DIRECTORATE GENERAL FOR SOCIAL SERVICE AND
REHABILITATION

**MINISTRY OF SOCIAL AFFAIRS
REPUBLIC OF INDONESIA
2006**

FOREWORDS

To settle matters related to Jugun lanfu, Japanese Government formed an institution called Asian Womens Fund (AWF). And for the implementation in Indonesia a Memorandum of Understanding (MOU) between The Ministry of Social Affairs of the Republic of Indonesia and The Asian Women's Fund concerning Promotion of Social Welfare Services For Elderly People in Indonesia was already signed on March 25, 1997. The Government of Indonesia through the Ministry of Social Affairs in cooperation with Asian Womens Fund handled the matters by way of building/rehabilitating Social services institution for the elderly (Panti Sosial Tresna Werdha) in Indonesia. In accordance with the MOU, the cooperation will be end in March 2007. Consequently the Ministry of Social Affairs feels obliged to make report to Asian Womens Fund on the whole activities. The report is to give account on the realization and the benefits of the cooperation.

Based on the data of Directorate Of Social Services for Elderly, there are 235 Social Institutions for the elderly throughout the 29 in provinces in Indonesia. Out of this number, 2 Social services institutions for the elderly are managed by the central government, 71 Social services institutions for the elderly are managed by provincial governments, and there are 163 Social Services institutions for the elderly are managed by private organization.

On collaboration with Asian Womens Fund, we have completly construction/renovation for 69 Social services institution for the elderly, It comprises construction of 61 Social services for the elderly and the supporting equipment and renovation of 8 Social Institution for the elderly in 26 provinces. The total of aid fund of Asian Women Fund used is Rp. 24,156,315,649 (twenty four billion one hundred fifty six million three hundred fifteen thousand six hundred forty nine rupiahs).

**Director General for Social
Rehabilitation and Services,**

**Makmur Sunusi, Phd
NIP.17001034**

TABLE OF CONTENT

FOREWORD

- A. CHRONOLOGY OF HANDLING COMFORTER WOMEN ISSUE (EX JUGUN IANFU) BY THE GOVERNMENT OF REPUBLIC OF INDONESIA.
- B. THE BENEFIT OF ASIAN WOMEN'S FUND AID (AWF).
- C. THE RESULTS OF MINISTRY OF SOCIAL AFFAIRS' EVALUATION ON THE BUILDINGS SUPPORTED BY AWF.
- D. THE VISITS OF AWF TEAM DURING THE PERIOD OF COOPERATION.
- E. REALIZATION OF SOCIAL SERVICES INSTITUTIONS FOR THE ELDERLY' CONSTRUCTION FROM PHASE I TO PHASE VII, (ATTACHED).
- F. ATTACHEMENT.
 - 1. Map of Institutions for the elderly location under AWF aid (attached)
 - 2. Pictures of Institutions for the elderly construction under AWF aid (attached)

CLOSING

A. CHRONOLOGY OF HANDING COMFORTER WOMEN ISSUE (EX JUGUN IANFU) BY THE GOVERNMENT OF REPUBLIC OF INDONESIA

1. Law No 13 of 1958 regarding Peace Agreement and War Reparation between Republic of Indonesia and Japanese Government and Protocol and concerned Memorandums stipulate that *“The Japanese Government is ready to pay war reparation to the Government of Republic of Indonesia for compensation of damage and suffering made by the Japanese government during the war”*.
2. The issue of comforter women or Jugun Ianfu came into surface since December 1991 as the Japanese Government took an initiative to conduct a deep study regarding the issue of comforter women in the effort to realize Japan’s Peace, Friendship and Exchange Initiative” of Japanese Government and people. This measure is based on the reality of more women have been suffered as a result of maltreatment committed by Japanese military ruler in ex Japanese occupation countries such as Korea, the Philippines, India, China, Burma, Hong Kong, Macao and Indo China.
3. According to the above-mentioned study, Cabinet Councilor Office on External Affairs (August 4th, 1993) acknowledged that it was impossible to know an exact number of women recruited as sexual servers of soldiers during the war due to the absence of related documents.
4. On August 31st 1994, Japanese Prime Minister Tomihiro Murayama emphasized in his statement :
 - a. Apology statement for the suffering taking place during Japanese military occupation during the World War II in Asian countries
 - b. The deep apology would be materialized among others through increasing mutual understanding of the two countries and societies for better future generations.
5. As realization of point 3 above, on June 14th, 1995 Chief Cabinet Secretary, Koizumi Igarashi announced the formation of ASIAN WOMEN’S FUND which started to work on July 19th 1995 and directly implemented activities related to Jugun Ianfu problem. ASIAN WOMEN’S FUND was funded by Japanese Government and society.

6. Since the beginning, the Government of Indonesia has asserted not to ask for compensation. It only expected that the Japanese Government makes a great effort to seek best solution for this issue. This is based on the willingness of the Government of Indonesia to maintain its national dignity particularly for the victims.

7. Furthermore, on August 24th, 1995 a meeting between Secretary General of Ministry of Social Affairs of the Republic of Indonesia and Mr. Shuichiri Megata, Councilor of Japanese Embassy for Indonesia was held. In the meeting, the Japanese Prime Minister's (Mr. Murayama) depicted a program plan for comforter women issue is as follows:
 - a. "ASIAN WOMEN'S FUND" has been established to execute compensation to sexually comforter women, including in Indonesia;
 - b. The Japanese Government together with Japanese people would contribute to prepare fund for ASIAN WOMEN'S FUND. The fund would be allocated for the welfare and health of women. The compensation totaled ¥ 380 million for approximately 10 years;
 - c. The Japanese Government would express deep regret and forgiveness;
 - d. Meanwhile, the Japanese Prime Minister Murayama personally has met a ex comforter woman (from Indonesia) and promised to immediately decide the ways to express remorse of Japanese people relating with the issue.

8. Based specially on the information in the point 7, the Ministry of Social Affairs has responded to Japanese Government that Indonesia Government welcomed the plan with some following conditions as:
 - a. The fund should be granted and channeled through the Government of Indonesia, which in this case is the Ministry of Social Affairs and not through other agency or individuals;
 - b. The management of fund utilization should be kept transparent;
 - c. The Government of Indonesia would appreciate if the fund could also be allocated for larger humanity purposes in the form of social welfare and health projects for women in general (including ex comforter women);
 - d. Technical discussions would immediately be held between the Government of Indonesia, in this case is the Ministry of Social Affairs and the Japanese Embassy.

9. The issue concerned was then discussed in Coordination Meeting of Welfare Area at Ministerial level (and also in Coordination Meeting of Political and Security Area) in July 1996. The decision of the coordination meeting was among others assigning Minister of Social Affairs to handle the issue in coordinative ways and report to the President.
10. On March 21st, 1997 the Japanese Prime Minister sent a letter of apology to the Government of Republic of Indonesia via the President of Indonesia. As follow up, on April 4th 1997 the President of Indonesia ordered the Minister of Social Affairs, through the letter of Minister of State Secretary No. R-66/M.Sesneg/4/1997 regarding Jugun Ianfu not to exaggerate the solution of Jugun Ianfu issue.
11. At the same time as the apology of Japanese Prime Minister, both countries have agreed the best way of settlement through the signing of a Memorandum of Understanding (MOU) between the Government of Indonesia represented by the Ministry of Social Affairs and the Japanese Government represented by Asian Women's Fund (AWF) in March 25th 1997. The document stated that the Japanese Government and people will provide social welfare services for elderly in Indonesia through the construction/rehabilitation of Social Services Institutions for the elderly for Elderly (Panti Sosial Tresna Werdha) valued as much as ¥ 380,000,000 via Asian Women's Fund (AWF) for 10 years.
12. As follow up of handling sexually comforter women, the Minister of Social Affairs formed Coordinating Team for Handling ex-Jugun Ianfu Compensation which was secured through Minister of Social Affairs Decision No 37/HUK/1997 dated on July 4th, 1997. The member of coordinating team is representatives of Attorney General Office, Ministry of Foreign Affairs, Coordinating Ministry for People Welfare, Ministry of Domestic Affairs, Ministry of Justice, Ministry of Information, Ministry Office for Women Affairs and Ministry of Social Affairs.
13. On December 9th, 1997 the Secretary General of House of Representatives on behalf of Chairman of House of Representatives sent a letter to Mr. Bambang Boedi S, Jl. Kapten Suwandah 62/167 Lumajang regarding policy request, which is in accordance with the directions of the chairman of House of Representatives,

Government policy in dealing with Jugun lanfu was construction/rehabilitation of Social Services Institutions for the elderly for Elderly (Panti Sosial Tresna Werdha).

14. On October 21st, 1998, Minister of Foreign Affairs sent a letter No. 1037/SB/X/98/06/01 to Minister of State Secretary asking the attitude of the Government of Republic of Indonesian concerning ex Jugun lanfu problem, which stated that any possible legal suit concerning the handling of ex Jugun lanfu problem would be dealt with by Attorney General. For that purpose, documents have been delivered to the Attorney General
15. On October 27th, 1998 the Minister of Social Affairs reported to the President via a letter No A/A-22/X-98/MS regarding Government Policy on handling ex Jugun lanfu. The letter clarified that based on information from Second Secretary of Japanese Embassy, the model of addressing ex Jugun lanfu as implemented in Indonesia through construction/rehabilitation of Social Services Institutions for the elderly for Elderly (in accordance with the MOU) is the best model.
16. As follow up of Social Minister's letter as mentioned in point 14, on December 31st 1998 the President ordered the Coordinating Minister for People Welfare and Poverty Alleviation, Minister of Foreign Affairs, Minister of Domestic Affairs and Minister of Social Affairs through the letter of Minister of State Secretary No B.679/M Sesneg/12/1998 regarding Government Policy on handling matters related to ex Jugun lanfu, i.e. the handling of ex Jugun lanfu remains the policy of the Government of Republic of Indonesia

Furthermore, since protests and critics from the community to make more coordinative policy in dealing with Jogun Yanfu, the following decisions have been made:

1. On June 22nd, 2001 Minister of Health and Social Welfare formed Coordinating Team for Handling Claims of Comforter Women (Jugun lanfu), which was secured with decision of Ministerial of Health and Social Welfare of the Republic of Indonesia No 10A/HUK/2001 dated June 22nd,2001.
2. The membership of Coordinating Team is representatives of General Attorney Office, Ministry of Foreign Affairs, Coordinating Ministry Office of Public Welfare, Ministry of Domestic Affairs, Ministry of Justice, Ministry of Information, Ministry Office of Women Roles and Ministry of Social Affairs.

3. Report on the Policy to Handle Comforter Women (Jugun Ianfu) consisting of: Background, Legal Framework, Indonesia Government Policy and Implementation of AWF aid, dated on January 31st 2002, prepared by Director General for Social Services and Rehabilitation, delivered to Asian Women's Fund and Japanese Embassy in Indonesia via Political Section I.
It demonstrated Indonesian Government Policy to address ex Jugun Ianfu refers to the agreed Memorandum of Understanding dated on March 25th, 1997.
- 4.. Minister of Social Affairs' Letter No. A/A-115/IV-02/MS dated on April 2nd, 2002 sent out to the President regarding Confirmation on Government Policy in Handling ex Jugun Ianfu asserted that the Government of Indonesia used the MOU agreed by both countries in dealing with ex Jugun Ianfu.
5. On April 17th, 2002 the Minister of Social Affairs formed Coordinating Team for Handling Matters Related to Jugun Ianfu Claims which was secured with Ministerial of Social Affairs' Decision No 25/HUK/2002 on April 17th 2002. The membership of Coordinating Team is representatives of General Attorney Office, Ministry of Foreign Affairs, Coordinating Ministry Office of People Welfare, Ministry of Domestic Affairs, Ministry of Justice, Ministry of Communication and Information, Ministry Office of Women Empowerment, Indonesia Corps of Women (KOWANI) and Ministry of Social Affairs.

B. THE BENEFIT OF ASIAN WOMENS FUND (AWF)

The benefit of Asian Women's Funds' aid are:

1. The aid implies that the Japanese government has met its promise to compensate for the casualty caused by Japanese soldiers during Japanese occupation.
2. The construction of additional building in Social Services Institutions for the elderly for Elderly in Indonesia has increased the capacity of Social Services Institutions for the elderly to accommodate more clients
3. The equipment delivered to Social Services Institutions for the elderly under this program is also useful for the elderly such as television set, wheelchairs, refrigerators, tables, beds and others which can be used by elderly.
4. The elderly can live in proper buildings that make them live comfortably
5. To motivate Social Services Institutions for the elderly staff to renovate another buildings surrounding AWF aided buildings.

C. THE RESULTS OF MINISTRY OF SOCIAL AFFAIRS' EVALUATION ON THE BUILDINGS SUPPORTED BY AWF

1. All Social Services Institutions for the elderly already constructed under Asian Womens Funds aid are so far used as service facility / place for elderly
2. The buildings are in good condition and inhabited by elderly
3. Since regional autonomy policy, the construction or rehabilitation of Social Services Institutions for the elderly require longer period of time for coordination with local Government
4. The quality of building is generally good, the designs and the structures are suited to local culture.
5. The central office of Ministry of Social Affairs has set a standard for construction of Social Services Institutions for the elderly; there is only a few of Social Services Institutions for the elderly which is not equipped with accesibilities for elderly.

D. THE VISIT OF AWF TEAM DURING COOPERATION PERIOD:

1. On 1 – 6 February 2002, the visit of AWF team consisting of:

- a. Prof. Dr. Yasuaki ONUMA
- b. Ms. Momoyo ISE
- c. Mr. Ken FURUYA, Ministry of Foreign Affairs, Japan

The Social Services Institution for the elderly visited are:

- a. Usada Mulya Social Services Institution for the elderly, Cengkareng – West Jakarta
- b. Budi Dharma Social Services Institution for the elderly, Bekasi – West Jawa
- c. Minaula Social Services Institution for the elderly, Kendari – Southeast Sulawesi.

2. On 9 – 13 September 2002, the visit of AWF team consisting of:

- a. Ms. Mizuho MATSUDA
- b. Ms. Tomoko MANAKA
- c. Mr. Toshihiro KANOH
- d. Mr. Naoki SENMYO, Ministry of Foreign Affairs, Japan

The Social Services Institution for the elderly visited are:

- a. Jiwa Baru Social Services Institution for the elderly, Garut – West Java
- b. Budi Dharma Social Services Institution for the elderly, Bekasi – West Java
- c. Budi Daya Social Services Institution for the elderly, Karawang – West Java

- d. Dharma Bakti Social Services Institution for the elderly, Solo – Central Java
 - e. Wening Werdhoyo Social Services Institution for the elderly, Ungaran – Central Java
 - f. Budi Luhur Social Services Institution for the elderly, Lubuk Linggau – South Sumatera.
 - g. Wargatama Social Services Institution for the elderly, Palembang – South Sumatera
 - h. Nirwana Puri Social Services Institution for the elderly, Samarinda – East Kalimantan
3. On 16 – 22 March 2003 the visit of AWF team consisting of:
- a. Ms. Mizuho MATSUDA
 - b. Ms. Tomoko MANAKA
 - c. Mr. Naoki SENMYO, Ministry of Foreign Affairs, Japan
- The Social Services Institution for the elderly visited are:
- a. Budi Agung Social Services Institution for the elderly, Kupang – East Nusa Tenggara
 - b. Muhammadiyah Social Services Institution for the elderly, Probolinggo – East Jawa
 - c. Wiloso Werdho Social Services Institution for the elderly, Purworejo – Central Java
 - d. Sinta Rangkang Social Services Institution for the elderly, Palangkaraya – Central Kalimantan
4. On 16 – 20 February 2004, the visit of AWF team consisting of:
- a. Ms. Momoyo ISE, Senior Managing Director, AWF.
 - b. Ms. Mizuho MATSUDA, Programme Director, AWF
 - c. Mr. Tomoko MANAKA, Staff.
 - d. Mr. Tsuyoshi EBIHARA, Official, Ministry of Foreign Affairs Jepang Tokyo
- The Social Services Institution for the elderly visited are:
- a. Kasih Ibu Social Services Institution for the elderly, Indramayu – West Java
 - b. Silih Asih Social Services Institution for the elderly, Subang – West Jawa
 - c. Wana Seraya Social Services Institutions for the elderly, Denpasar – Bali
5. The visit of AWF Team from Japan on 26 – 30 January 2005 consisting of :
- a. Ms. Mizuho MATSUDA, Programme Director, AWF

b. Mr. Tomoko MANAKA, Staff.

The Social Services Institution for the elderly visited are:

- a. Ina I Sahati Social Services Institution for the elderly, North Sulawesi Province
- b. Pengasih Social Services Institution for the elderly, North Sulawesi Province

6. On 22 – 27 March 2006 the visit of AWF Team consisting of:

- a. Mr. Haruki WADA (Acting Executive Director),
- b. Ms. Tomoko S. MANAKA (Staff)
- c. Ms. WATANABE (Staff)

The Social Services Institution for the elderly visited are:

- a. Pangeran Hidayatoellah Social Services Institution for the elderly, West Java Province
- b. Sabai Nan Aluih and Syech Burhanuddin Social Services Institution for the elderly, West Sumatera Province

7. On 3 – 6 October 2006, the visit of AWF team consisting of:

- a. Mr. Haruki WADA (Acting Executive Director),
- b. Ms. Mayumi OKA (Director of AWF)

The Social Services Institution for the elderly visited are:

- a. Azzakariyah Social Services Institution for the elderly, Jambi
- b. Budhi Luhur Social Services Institution for the elderly, Jambi

*supplement by the AWF

January 1998

Mr. Tatsuo YAMAGUCHI, Board Member

Ms. Tomoko MANAKA, Staff

PSTW Abdi Binjai, North Sumatera

March, 1999

Mr. Toshihiro KANO, Public Relations Director

PSTW Mappaka Sunggu Pare-Pare, South Sulawesi

PSTW Cipocok Jaya, Serang, Banten, West Java

December, 1999

Ms. Momoyo ISE, Executive Director

Mr. Tatsuo YAMAGUCHI, Board Member
PSTW Usaha Mulya Cengkareng, West Jakarta
PSTW Abiyoso Sleman, Yogyakarta

December, 2000

Ms. Mizuho MATSUDA, Programme Director
Ms. Tomoko MANAKA, Staff
PSTW Bahagia Magetan, East Jawa
PSTW Jasa Ibu, West Sumatera

May, 2005

Ms. Mizuho MATSUDA, Programme Director
PSTW Teratai Palembang South Sumatera
PSTW Wisma Mulia, DKI Jakarta
PSTW Budhi Sejahtera II, South Kalimantan

Mr. Haruki WADA, Acuting Executive Director
Ms. Tomoko MANAKA, Staff
PSTW Puspa Karma Mataram, NTB
PSTW Mardi Utomo Jombang, East Jawa
PSTW Margo Mulyo Jember, East Jawa

January, 2007

Mr. Haruki WADA, Executive Director
Ms. Mizuho MATSUDA, former Programme Director
Yayasan Family Blitar, East Jawa
PSTW Wlingi Blitar, East Jawa
Yayasan Akhir Bahagia Pasuruan, East Jawa
Yayasan Akhir Bahagia Cimahi, Bandung, West Jawa

Ms. Eiko SATO, Staff
Ms. Tomoko MANAKA
PSTW Tat Twam Asi, Papua
PSTW Gau Mabaji Goa, South Slawesi

E. REALIZATION OF SOCIAL SERVICES INSTITUTIONS FOR THE ELDERLY' CONSTRUCTION FROM PHASE I TO PHASE VII, (ATTACHED)

F. ATTACHMENTS

1. Map of Social Services Institutions for the elderly location under AWF aid (attached)

2. Pictures of Social Services Institutions for the elderly construction under AWF aid (attached)

CLOSURE

The report of cooperation between Ministry of Social Affairs and Asian Women's Fund on the handle of Jugun Ianfu problem implemented in Indonesia for 10 years is a final report of the cooperation to be submitted to AWF. Hopefully, this report provides clarification on problem solution of Jugun Ianfu in Indonesia and serves as basis for future work.

Although the cooperation between Ministry of Social Affairs and Asian Women's Fund is already concluded, we hope further assistance from Japanese Government to improve services for elderly and especially through instituional services in order to promote their welfare in Social Services Institutions for the elderly throughout Indonesia.

Finally, we thank to Asian Women's Fund for the aid and cooperation for 10 years. We hope that this report is useful for ex Jugun Ianfu as well as Indonesia and Japanese people.

**RECAPITULATION OF FUND RECEIVED FROM AWF, PHASE I
YEAR 1997 THROUGH 1998**

NO.	PROVINCE	NAME OF INSTITUTION	NAME OF PERSON IN CHARGE	ELDERLY PEOPLE'S HOME AREA	CLIENT		NAME OF CONTRACTOR	YEAR OF CONSTRUCTION	TOTAL FUND SPENT
					INSTITUTION	AWF			
1.	Central Java	PSTW Wening Wardoyo 1. Ungaran, Semarang	Dra. Cicik Sri Wuryani (Kanwil Depsos)	180 m2	110	10	PT Arta Sarana	1998	146,000,000
2.	East Java	PSTW Bahagia Magetan 2. PSTW Bahagia Magetan	Drs. Nandi Sugandi (Kanwil Depsos)	180 m2	60	12	CV. Mugi Rahayu	1998	146,000,000
3.	North Sumatera	PSTW Abdi Binjai 3. PSTW Abdi Binjai	dr. Supangadi (Kanwil Depsos)	180 m2	120	10		1998	146,000,000
4.	South Sulawesi	PSTW Mappaka Sunggu Pare- 4. Pare	Drs. Zaenuddin Umar (Kanwil Depsos)	180 m2	50	10	CV. Sapta Tunggal	1998	146,000,000
5.	Southeast Sulawesi	PSTW Minaula, Kendari 5. PSTW Minaula, Kendari	Drs. Syamsuddin (Kanwil Depsos)	180 m2	100	8		1998	146,000,000
	Total								730,000,000

**RECAPITULATION OF FUND RECEIVED FROM AWF, PHASE III AND IV
YEAR 2000 THROUGH 2001**

NO.	PROVINCE	NAME OF INSTITUTION	NAME OF PERSON IN CHARGE	ELDERLY PEOPLE'S HOME AREA	CLIENT		NAME OF CONSTRUCTOR	YEAR OF CONSTRUCTION	TOTAL BUDGET		TOTAL FUND SPENT
					INSTITUTION	AWF			CONSTRUCTION	EQUIPMENT	
1.	West Java	1. PSTW Budhi Dharma Bekasi	M. Sabir Gayo, S.Sos (PSTW)	180 m2	75	10	PT. Cemara Mutu Semesta	Nopember 2001	246,960,000	62,500,000	309,460,000
		2. PSTW Budhi Daya Kerawang	Drs. Firman Kameswara (Dinas Sosial)	180 m2	60	16	CV. Jabar Sains/CV. Sukapura	2002	231,660,000	62,500,000	294,160,000
		3. PSTW Jiwa Baru Garut	Drs. Firman Kameswara (Dinas Sosial)	180 m2	75	14	CV. Megalith/CV. Satya Abadi	2002	228,600,000	62,500,000	291,100,000
2.	Central Java	4. PSTW Dharma Bhakti Surakarta	Soesmiasih Prawiro, SH (Dinas Sosial)	180 m2	49	8	CV. Pratama	2001	232,200,000	62,500,000	294,700,000
		5. PSTW Wiloso Werdho Purworejo	Maria Sri Yuliati, BSc (Dinas Sosial)	180 m2	37	8	CV. Pratama	2001	224,640,000	62,500,000	287,140,000
3.	Bali	6. PSTW Wana Seraya Denpasar	Drs. I. Nyoman Wiyoga (Dinas Sosial)	180 m2	100	10	CV. Permata Konsultan	2003	225,000,000	55,000,000	280,000,000
4.	East Java	7. PSTW Muhammadiyah Probolinggo	Drs. Soewadi (PSTW)	180 m2	50	10	CV. BWG	2001	240,300,000	62,500,000	302,800,000
5.	South Sumatera	8. PSTW Budhi Luhur Lubuk Linggau	Drs. Sopwan Jauhari (Dinas Sosial)	180 m2	60	8	CV. Purnama Cons.	2001	224,820,000	62,500,000	287,320,000
6.	NTT	9. PSTW Budhi Agung Kupang	Drs. JD. Amtiran (PSTW)	180 m2	80	10	CV. Solid	2002	242,740,000	62,276,236	305,016,236
7.	Central Kalimantan	10. PSTW Sintang Rangkang	Urbanus Sihite, BSW (PSTW)	100 m2	80	10	CV. Aris Setia Utama	2001	222,120,000	62,500,000	284,620,000
TOTAL									2,319,040,000	617,276,236	2,936,316,236

**RECAPITULATION OF FUND RECEIVED FROM AWF, PHASE V AND VI
YEAR 2003 THROUGH 2004**

NO.	PROVINCE	NAME OF INSTITUTION	NAME OF PERSON IN CHARGE	ELDERLY PEOPLE'S HOME AREA	CLIENT		NAME OF CONTRACTOR	YEAR OF CONSTRUCTION	TOTAL BUDGET		TOTAL FUND SPENT
					INSTITUTION	AWF			CONSTRUCTION	EQUIPMENT	
1.	West Java	1. PSTW Kasih Ibu Cimahi	Dra. Nike Hariyani (Dinas Sosial)	180 m2	55	10	CV. Sugi Lestari	2004	240,000,000	79,500,000	319,500,000
		2. PSTW Hidayatloelloh	Dra. Nike Hariyani (Dinas Sosial)	180 m2	25	10	CV. Sugi Lestari	2004	240,000,000	79,500,000	319,500,000
		3. PSTW Welas Asih Tasikmalaya	Dra. Nike Hariyani (Dinas Sosial)	180 m2	59	10	CV. Sugi Lestari	2004	240,000,000	79,500,000	319,500,000
		4. PSTW Silih Asih Subang	Dra. Nike Hariyani (Dinas Sosial)	180 m2	24	12	CV. Sugi Lestari	2004	240,000,000	79,500,000	319,500,000
		5. PSTW An-Nahla Subang	Dra. Nike Hariyani (Dinas Sosial)	160 m2	12	10	CV. Orbit Cooperation	2005	249,000,000	74,000,000	323,000,000
2.	South Sumatera	6. PSTW Teratai Palembang	Hartini (PSTW)	180 m2	49	12	CV. Prima	2004	249,000,000	119,000,000	368,000,000
3.	NTB	7. PSTW Puspa Karma Mataram	Drs. Didik Kusnandika (PSTW) Wahyu	141 m2	110	12	CV. Anra Wijaya Perdana	2004	249,000,000	119,000,000	368,000,000
4.	Jambi	8. PSTW Budhi Luhur	Mulyana, BSw (PSTW)	180 m2	89	12	CV. Bhakti Utama	2005	249,000,000	74,000,000	323,000,000
5.		9. PSTW Azzakariyah	Faisal N, SST (Dinas Sosial)	180 m2	82	12	CV. Riky Setia Jaya	2004	249,000,000	74,000,000	323,000,000
6.	East Java	10. PSTW Margo Mulyo Jember	Drs. M. Hasan (PSTW)	154 m2	90	12	CV. Hawin Sakti	2004	240,000,000	114,000,000	354,000,000
		11. PSTW Mardi Utomo Jombang	Dra. Heri Kusbintarti (PSTW)	157 m2	80	12	CV. Putra Bahari	2004	240,000,000	114,000,000	354,000,000
7.	Central Java	12. PSTW Dewanata Cilacap	Dra. Budi Listyowati (PSTW)	180 m2	45	10	CV. Sami Jaya	2004	240,000,000	84,768,926	324,768,926
		13. PSTW Purboyuwono	Drs. Wibowo (PSTW)	180 m2	90	12	CV. Clampoc Indo	2004	240,000,000	84,000,000	324,000,000
									3,165,000,000	1,174,768,926	4,339,768,926

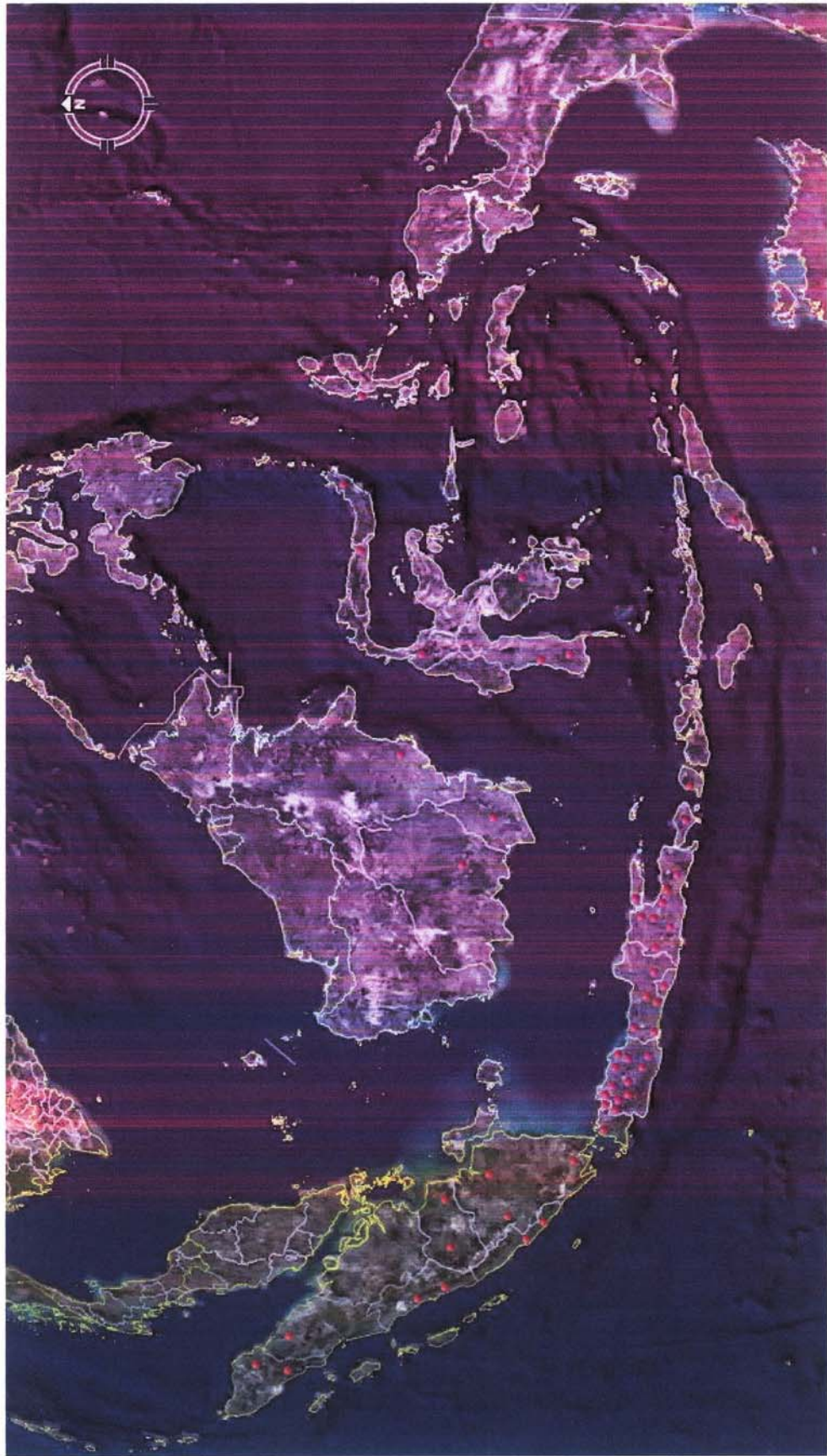
8.	West Sumatera	14. PSTW Sabai Nan Aliuh	Drs. Sunar Jalil (PSTW)	180 m2	110	12	CV. Artha Kreasi	2004	248,000,000	84,000,000	332,000,000
		15. PSTW Syech Burhanuddin	Yunasri Yunus,BSw (Dinas Sosial)	180 m2	30	10	CV. Tuah Saiyo	2004	248,000,000	84,000,000	332,000,000
9.	DKI Jakarta	16. PSTW Wisma Mulia	Hj. T.L. Benny Moerdoko (Yayasan)		68	12	PT. Toya Wastu Contractor	2005	265,000,000	74,000,000	339,000,000
10.	Papua	17. PSTW Tat Twam Asi	Ade Usman,SST (PSTW)	140 m2	80	10	CV. Sinar Kontruksi	2004	320,432,237	74,000,000	394,432,237
11.	North Sulawesi	18. PSTW Pengasih	Dra. Maria M Reppie (Dinas Sosial)	180 m2	30	10	UD. Citra Indo Abadi	2004	249,000,000	74,000,000	323,000,000
		19. PSTW Ina I Sahati	Dra. Maria M Reppie (Dinas Sosial)	180 m2	80	10	UD. Citra Indo Abadi	2004	249,000,000	74,000,000	323,000,000
12.	South Kalimantan	20. PSTW Budhi Sejahtera II	Drs. Pangah Haryanto (Dinas Sosial)	180 m2	90	12	CV. Putra Perdana	2004	240,000,000	84,000,000	324,000,000
13.	East Kalimantan	21. PSTW Nirwana Puri	Drs. Hifni (PSTW)	180 m2	103	10	CV. Indra Wahana Sejati	2004	249,000,000	115,000,000	364,000,000
		TOTAL							5,233,432,237	1,837,768,926	7,071,201,163

**RECAPITULATION OF FUND RECEIVED FROM AWF, PHASE VII
YEAR 2005 THROUGH 2006**

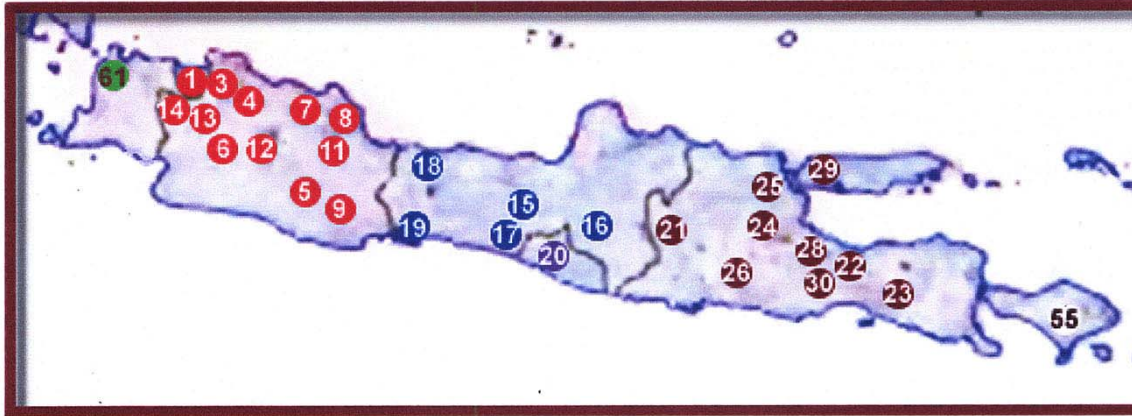
NO.	PROVINCE	NAME OF INSTITUTION	NAME OF PERSON IN CHARGE	ELDERLY PEOPLE'S HOME AREA	CLIENT		NAME OF CONTRACTOR	YEAR OF CONSTRUCTION	BUDGET		TOTAL FUND SPENT
					INSTITUTION	AWF			CONSTRUCTION	EQUIPMENT	
1.	Lampung	1. PSTW Bhakti Yuswa	Hj. Wahid Natsir Jacob, S.Sos. (Dinas Sosial)	180 m2	100		CV. Karya Teknik	2006	360,000,000	70,000,000	430,000,000
2.	Central Sulawesi	2. Yayasan Al-Kautsar	Drs. Ramadhan (Yayasan)	180 m2	11	8	CV. Pawana Cakti Utama. Cons.	2006	396,000,000	70,000,000	466,000,000
3.	Gorontalo	3. PSTW Beringin	Dra. Warni Mohi, M.Pd (Dinas Sosial)	180 m2	17	12	CV. Yupita	2006	450,000,000	70,000,000	520,000,000
4.	Bengkulu	4. PSTW Pagar Dewa	Drs. Jafri Ismail (PSTW)	180 m2	60		CV. Delfiesta Pratama	2006	360,000,000	70,000,000	430,000,000
		5. PSTW Amanah Manna	Nurwana Lela (PSTW)	108 m2	50		CV. Delfiesta Pratama	2006	162,000,000		162,000,000
5.	North Maluku	6. PSTW Himo-himo Ternate	Drs. Hasyim Yusuf (PSTW)	180 m2	60	14	CV. Mudita Fitrifa	2006	450,000,000	75,000,000	525,000,000
6.	South Sulawesi	7. PSTW Gau Mabaji Goa	Ridwan Arsyad, S.Sos (PSTW)	180 m2	100	10	CV. Citra Karya	2006	414,000,000	75,000,050	489,000,050
7.	East Java	8. PSTW Pare Kediri	Dra. Heri Kusbintarti (PSTW)	180 m2	90	10	NITYA Konsultan.	2006	441,000,000	76,900,000	517,900,000
		9. PSTW Mardi Utomo Jombang		180 m2	60	12	NITYA Konsultan.	2006	441,000,000	76,900,000	517,900,000
		10. Yayasan Family Blitar	Djariyah (Yayasan)	180 m2	30	20	CV. Summa Group	2006	441,000,000	84,250,400	525,250,400
		11. PSTW Wlingi Blitar	Widodo Ariyanto, SH, MM. (PSTW)	180 m2	30		NITYA Konsultan.	2006	441,000,000	84,250,400	525,250,400
		12. Yayasan Akhir Bahagia Pasuruan	Dra. Dyah Bintarini (Yayasan)	180 m2		12	CV. Permata Biru	2006	441,000,000	84,250,400	525,250,400
		13. PSTW Pola Raga Bangkalan	Drs. Edi Subrata (PSTW)	306 m2	30		NITYA Konsultan.	2006	459,000,000		459,000,000
		14. PSTW Sejahtera Pandaaan Pasuruan		250 m2			NITYA Konsultan.	2006	375,000,000		375,000,000

8.	NTT	15. PSTW Mawar Syaron	Yermias Sine, S.Sos. (Dinas Sosial)	180 m2	40	10	CV. Karya Elisa	2006	450,000,000	72,000,000	522,000,000
9.	NTB	16. PSTW Puspakarma	Drs. Dikdik Kusnandika (PSTW)	500 m2	100		CV. Cipta Gemilang	2006	500,000,000		500,000,000
10.	West Java	17. PSTW Budhi Dharma	M. Sabir Gayo, S.Sos. Msi. (PSTW)	180 m2	80	6	CV. Casablanca	2006	306,000,000	71,700,000	377,700,000
		18. PSTW Yayasan Wijaya Kusuma	Dra. Nike Hariani (Dinas Sosial)	180 m2	42	10	CV. Elmata	2006	360,000,000	72,000,000	432,000,000
		19. Yayasan Akhir Bahagia Cimahi, Bandung	Dra. Dyah Bintarini (Yayasan)	180 m2		10	CV. Ujung Jaya	2006	360,000,000	72,000,000	432,000,000
		20. Yayasan Akhir Bahagia Bogor	Dra. Dyah Bintarini (Yayasan)	180 m2		10	CV. Mekar Jaya	2006	306,000,000	71,700,000	377,700,000
		21. PSTW Pakutandang Ciparay	Dra. Sri Nuryanti (PSTW)	607 m2	150		CV. Gema Usaha	2006	648,270,000		648,270,000
11.	Banten	22. PSTW Cipocok Jaya	Slamet Imam W, BSW. (PSTW)	180 m2	60	12	CV. Gema Rizki	2006	360,000,000	70,000,000	430,000,000
12.	Aceh	23. Yayasan Panti Baitul Ibadah	Dra. Hj. Ratna Dewi, MM. (Yayasan)	180 m2	70	12	CV. Alas Perdana	2006	396,000,000	70,000,000	466,000,000
		24. Yayasan Al Huda Panti Jompo Syuhada	Drs. T. Razali Raden (Dinas Sosial)	180 m2	30		CV. Bahari Nusantara	2006	396,000,000	70,000,000	466,000,000
		25. Yayasan Darul Ihsan Engkrang, Ache Tenggara	Dra. Hj. Ratna Dewi, MM (Yayasan)	180 m2	25		CV. Alas Perdana	2006	396,000,000	70,000,000	466,000,000
13.	Central Java	26. PSTW Dewanata	Dra. Tuti Handayani (PSTW)	120 m2	75		CV. Suhada	2006	132,720,000		132,720,000
14.	South Sumatera	27. PSTW Teratai	Hartini (PSTW)	450,3 m2	48		CV. Aljun	2006	675,457,000		675,457,000
	Total								10,917,447,000	1,475,951,250	12,393,398,250

INDONESIA



Jawa – Bali



DKI Jakarta

1. PSTW Usada Mulya Jakarta
2. PSTW Wisma Mulia

Jawa Barat

3. PSTW Budhi Dharma Bekasi
4. PSTW Budhi Daya Kerawang
5. PSTW Jiwa Baru Garut
6. PSTW Pangeran Hidayatoellah
7. PSTW Silih Asih
8. PSTW Kasih Ibu
9. PSTW Welas Asih
10. PSTW Annahla Subang
11. PSTW Yayasan Wijaya Kusuma
12. Yayasan Akhir Bahagia Cimahi
13. Yayasan Akhir Bahagia Bogor
14. BPSTW Pakuyandang Ciparay

Jawa Tengah

15. PSTW Wening Werdoyo Ungaran
16. PSTW Dharma Bhakti Solo
17. PSTW Wiloso Werdho Purworejo

18. PSTW Purbo Yuwono

19. PSTW Dewanata

DI Jogjakarta

20. PSTW Abiyoso Yogyakarta

Jawa Timur

21. PSTW Bahagia Magetan
22. PSTW Muhamadiyah Probolinggo
23. PSTW Margo Mulyo Jember
24. PSTW Mardi Utomo Jombang
25. PSTW Pare Kediri Lamongan
26. Yayasan Family Blitar
27. PSTW Wlingi Blitar
28. Yayasan Akhir Bahagia Pasuruan
29. PSTW Pola Raga Bangkalan
30. PSTW Sejahteraan Pandaan

Banten

31. PSTW Cipocok Jaya Serang

Sumatera



DI Aceh

- 31. Yayasan Panti Baitul Ibadah
- 32. Yayasan Alhuda Panti Kompo Syuhada
- 33. Yayasan Carul Ihsan Engkrang

Bengkulu

- 34. PSTW Pagar Dewa
- 35. PSTW Amanah Mana

Sumatera Utara

- 36. PSTW Abdi Binjai

Sumatera Barat

- 37. PSTW Jasa Ibu

- 38. PSTW Sabai Nan Aluih
- 39. PSTW Syech Burhannudin

Jambi

- 40. PSTW Budi Luhur
- 41. PSTW Azakariah

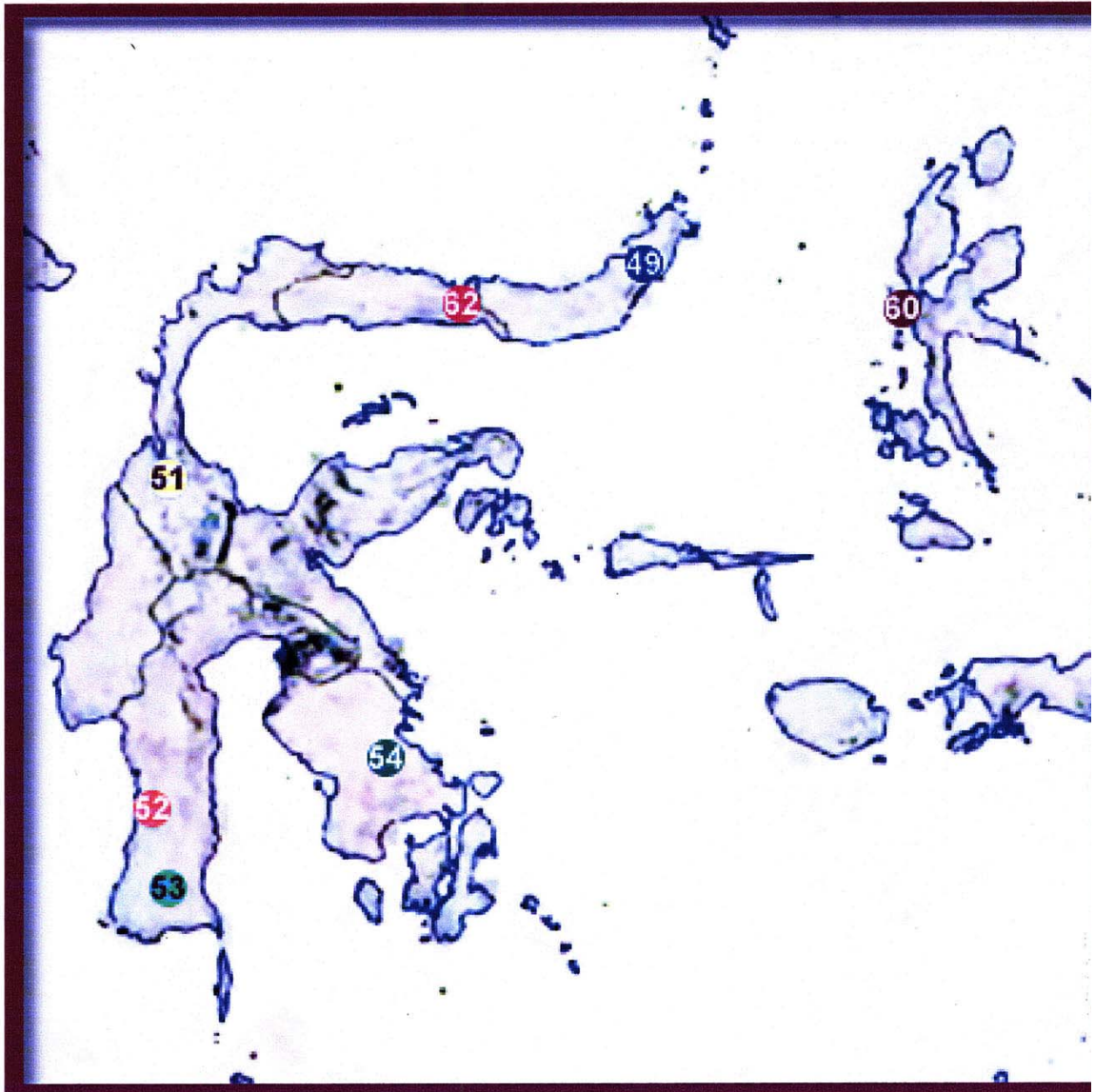
Sumatera Selatan

- 42. PSTW Warga Tama Inderalaya
- 43. PSTW Budi Luhur Lubuk Linggau
- 44. PSTW Teratai

Lampung

- 45. PSTW Bhakti Yuswa Natar

Sulawesi



Sulawesi Utara

- 49. PSTW Pengasih
- 50. PSTW Ina I Sahati

Sulawesi Tengah

- 51. Yayasan Al Kausar

Sulawesi Selatan

- 52. PSTW Mappakasunggu Pare-Pare
- 53. PSTW Gau Mabaji Goa

Sulawesi Tenggara

- 54. PSTW Minaula Kendari

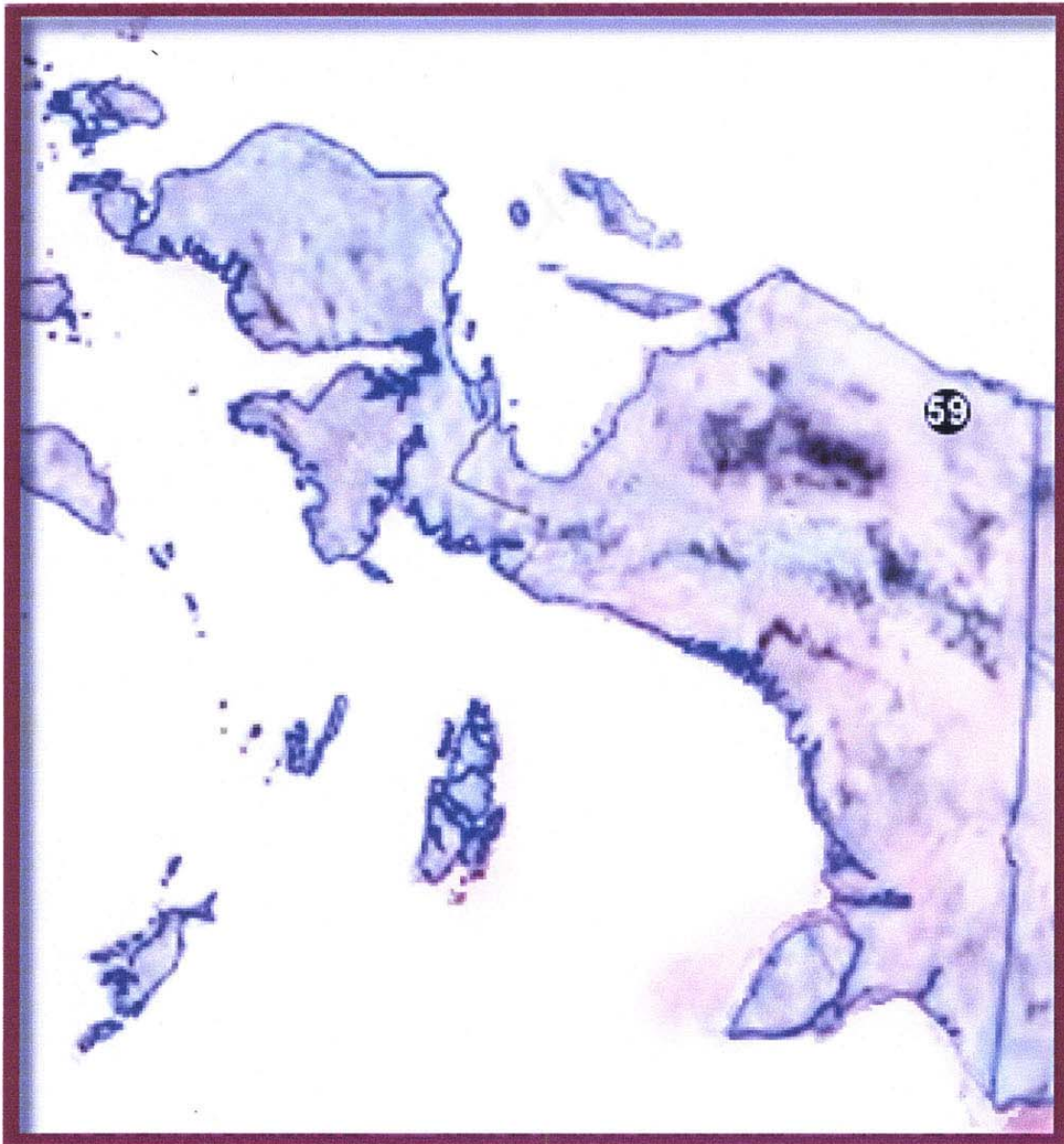
Maluku Utara

- 60. PSTW Himo-Himo

Gorontalo

- 62. PSTW Beringin

Irian



Irian Jaya
59. PSTW Tat Twan Asi

Nusa Tenggara



Nusa Tenggara Barat

56. PSTW Puspa Karma

Nusa Tenggara Timur

57. PSTW Budi Agung Kupang

58. PSTW Mawar Syaron

Kalimantan



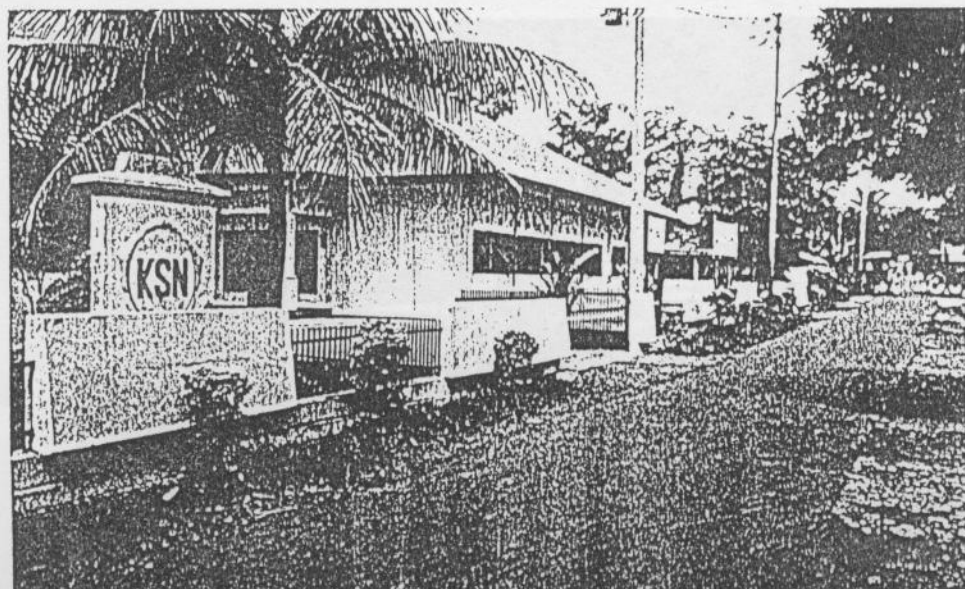
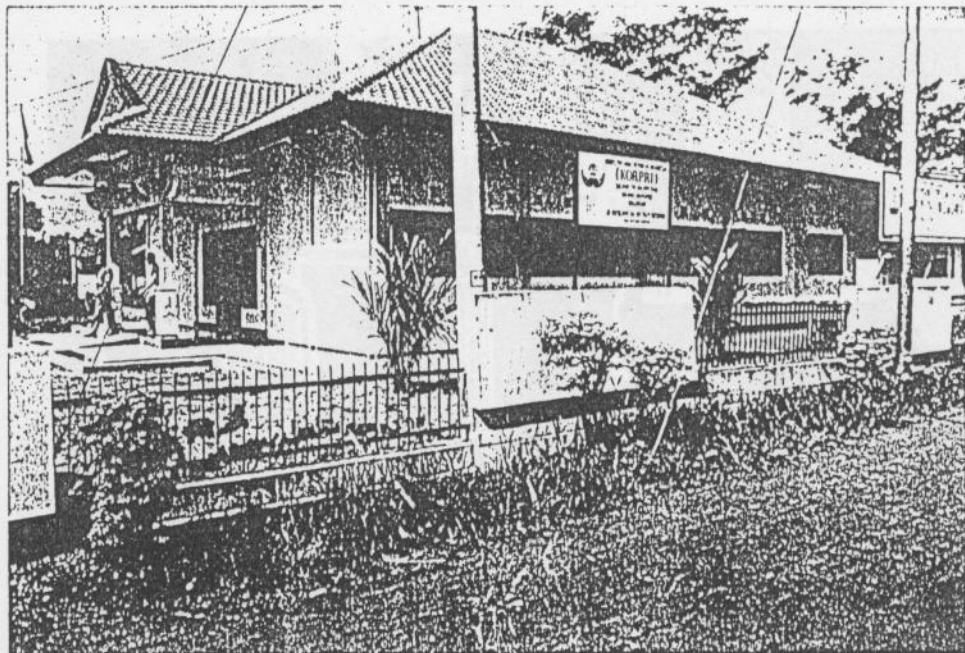
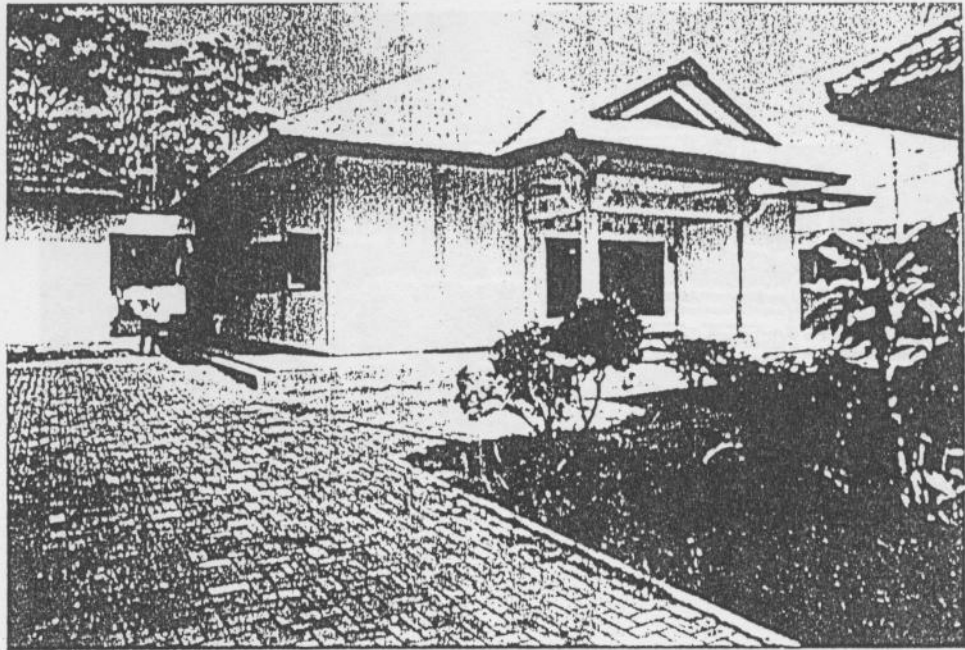
Kalimantan Tengah
46. PSTW Sinta Rangkang

Kalimantan Selatan
47. PSTW Budi Sejahtera

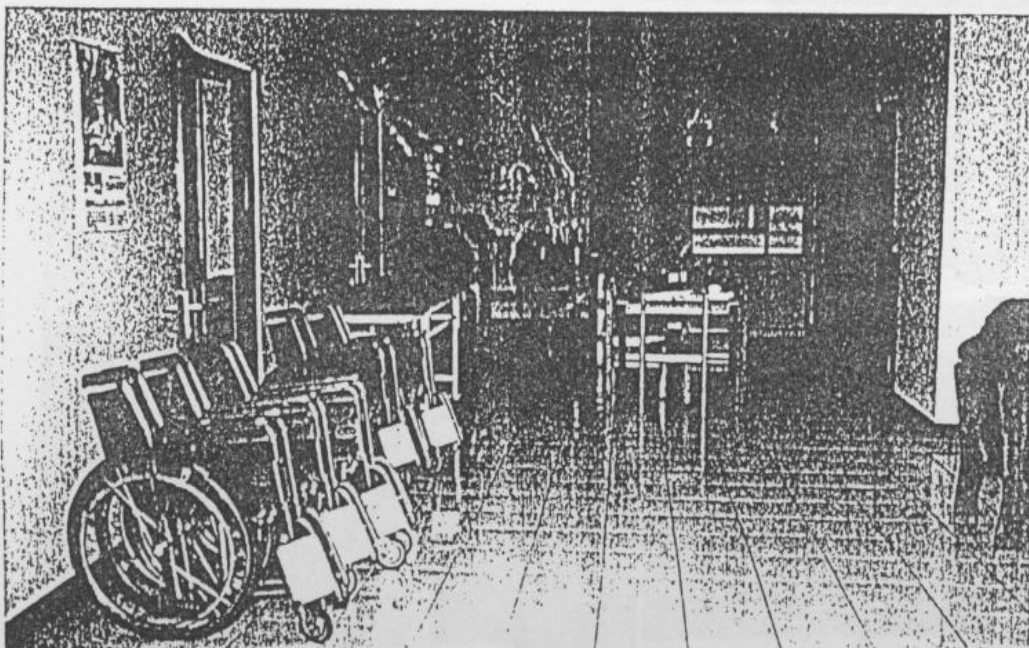
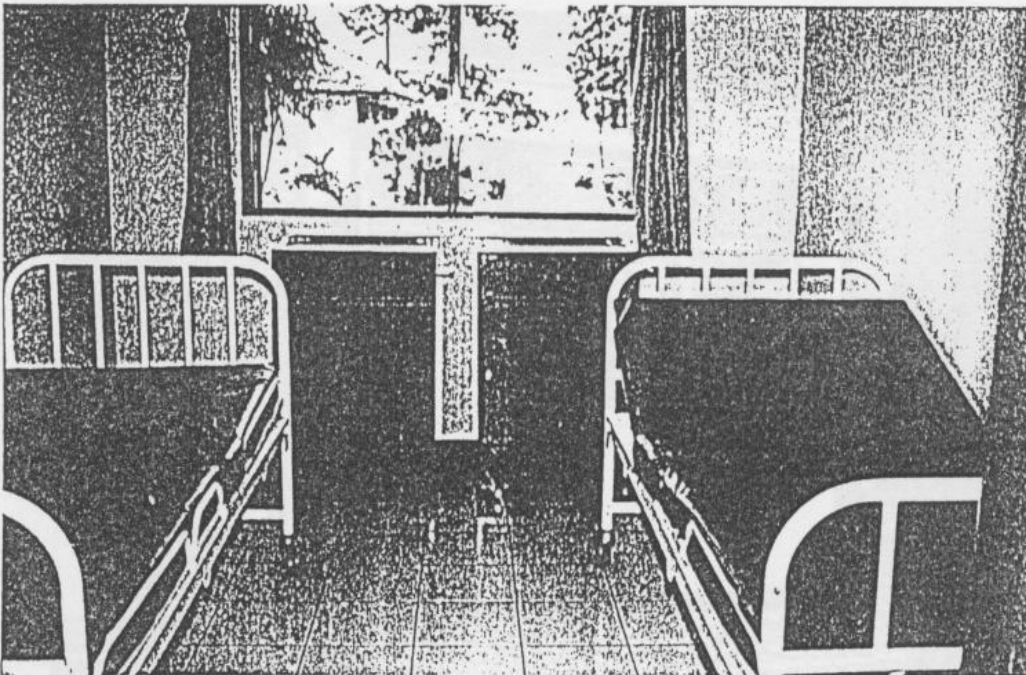
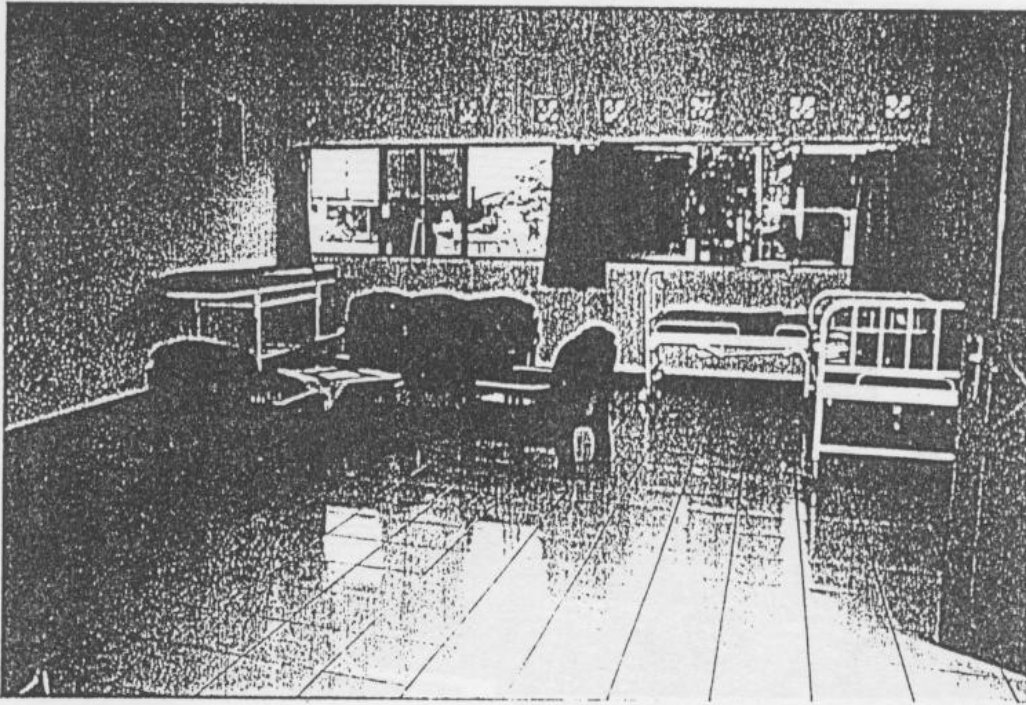
Kalimantan Timur
48. PSTW Nirwana Puri

**LAMPIRAN FOTO – FOTO
BANGUNAN BANTUAN AWF
TAHAP I
TAHUN 1997 S/D 1998**

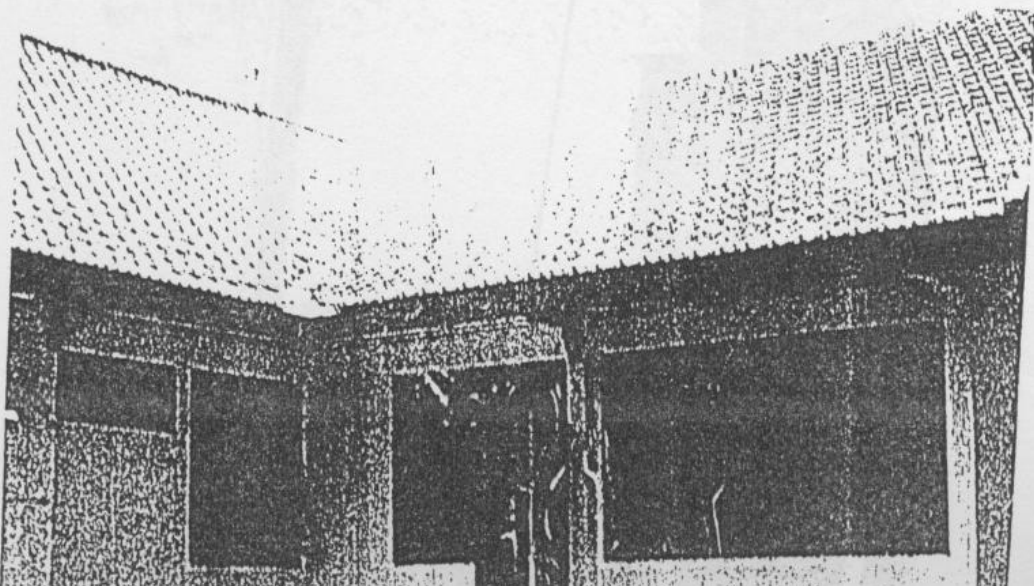
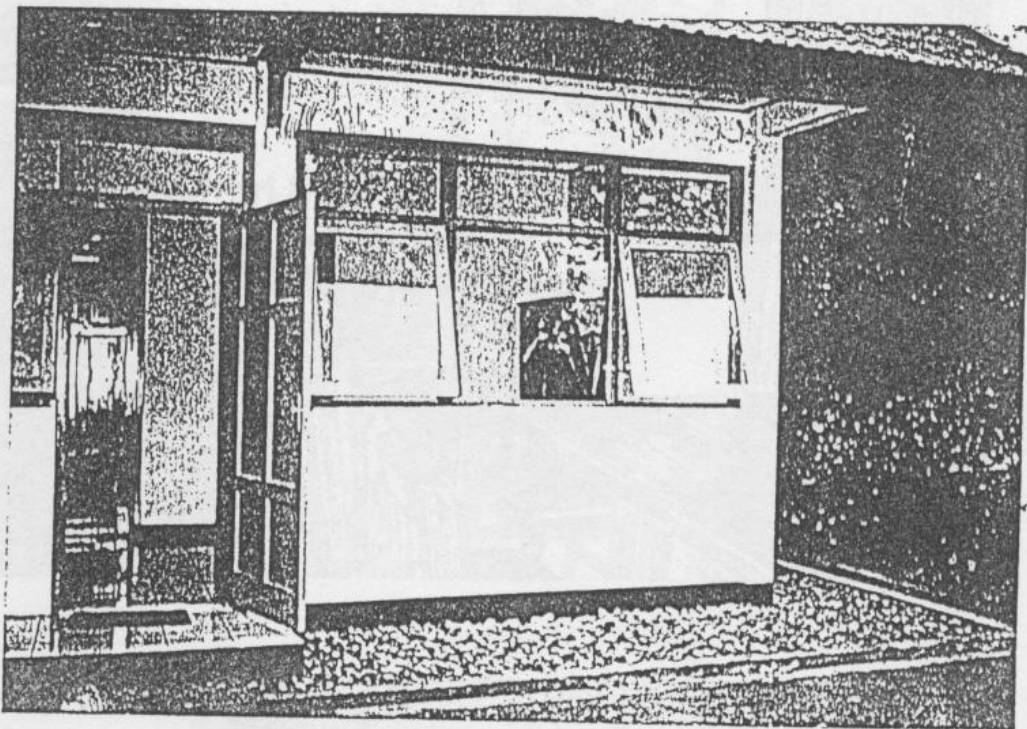
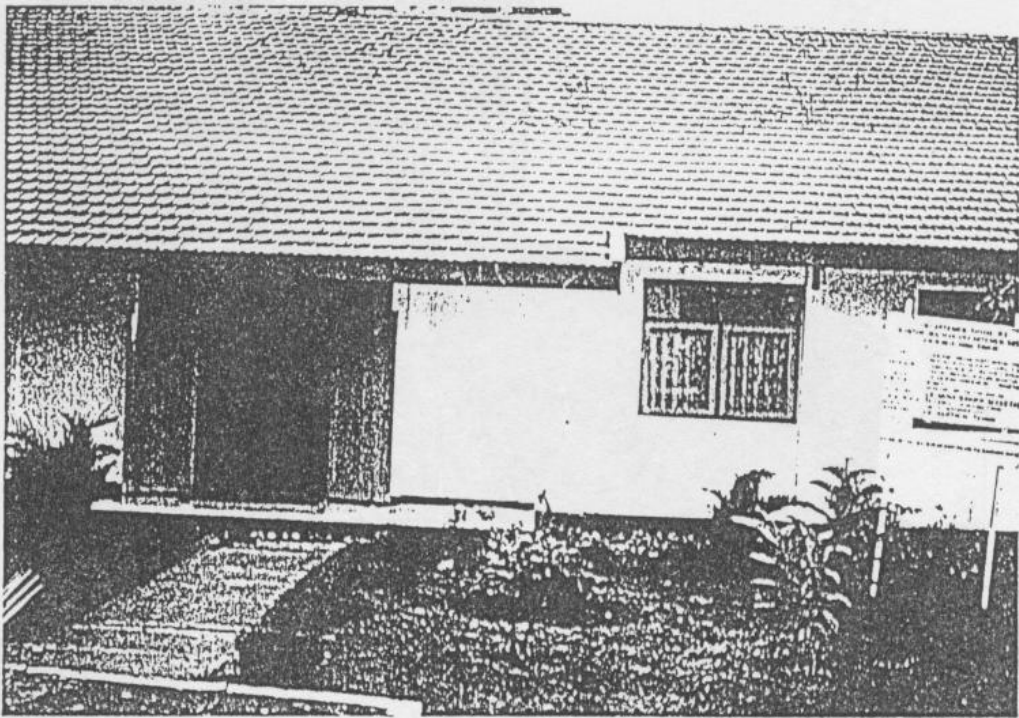
PSTW WENING WARDOYO
SEMARANG JAWA TENGAH



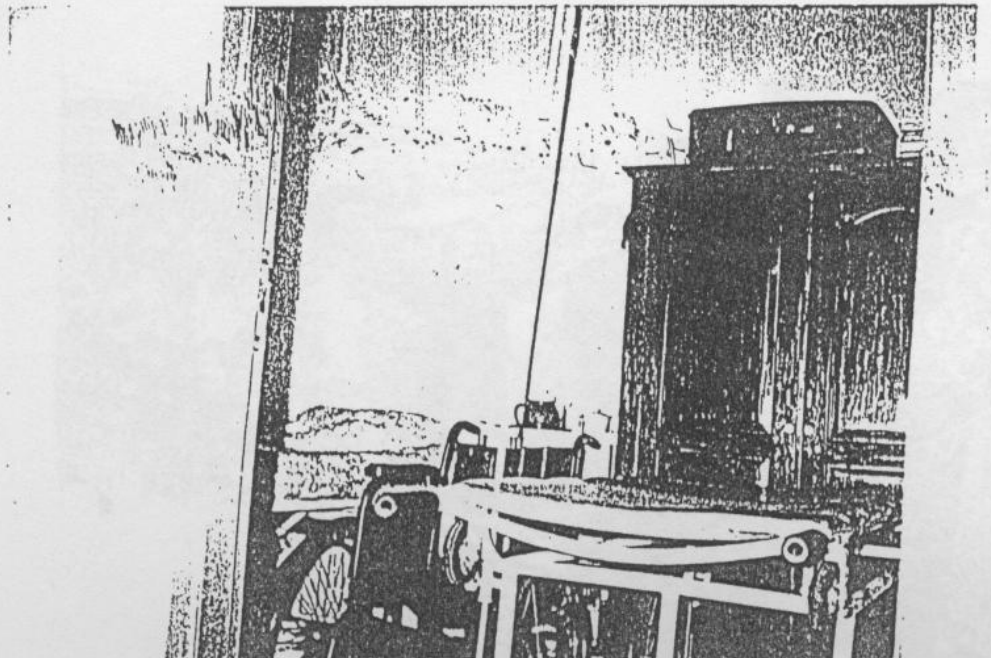
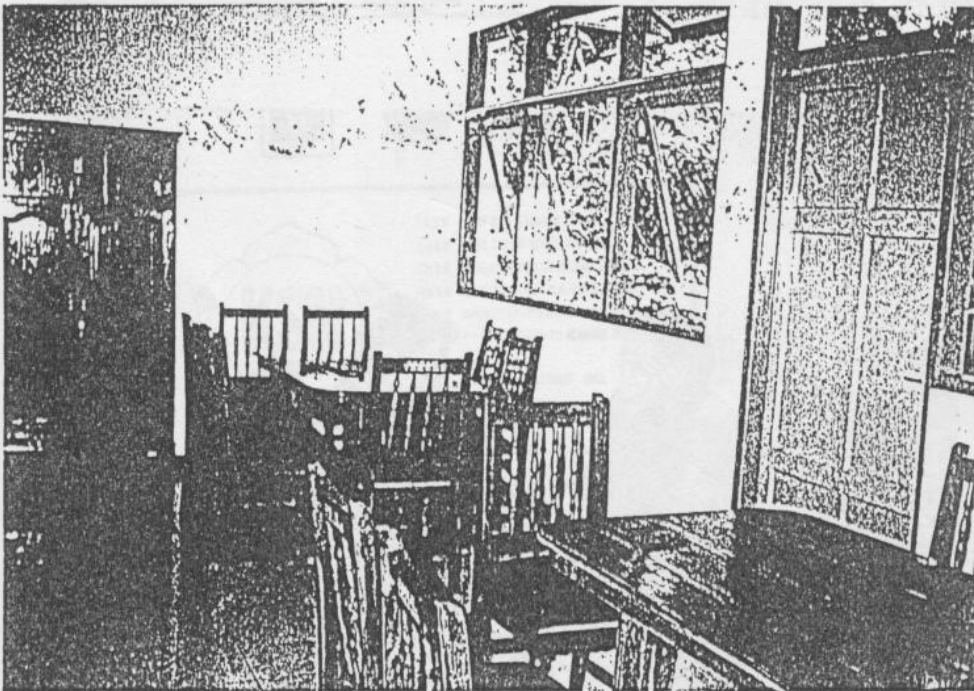
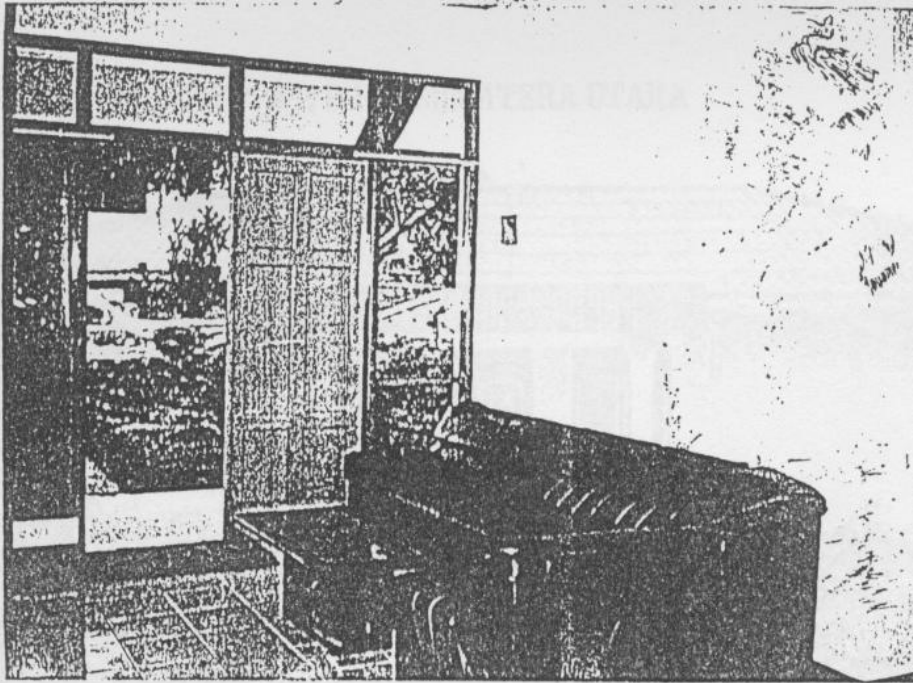
PERALATAN PSTW WENING WARDOYO
SEMARANG JAWA TENGAH



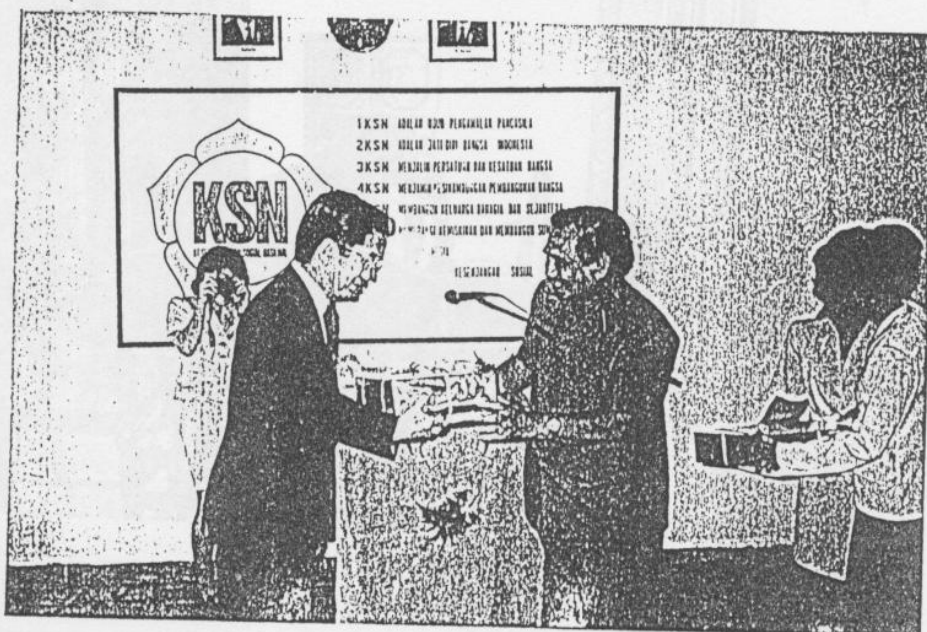
PSTW "BAHAGIA" JAWA TIMUR



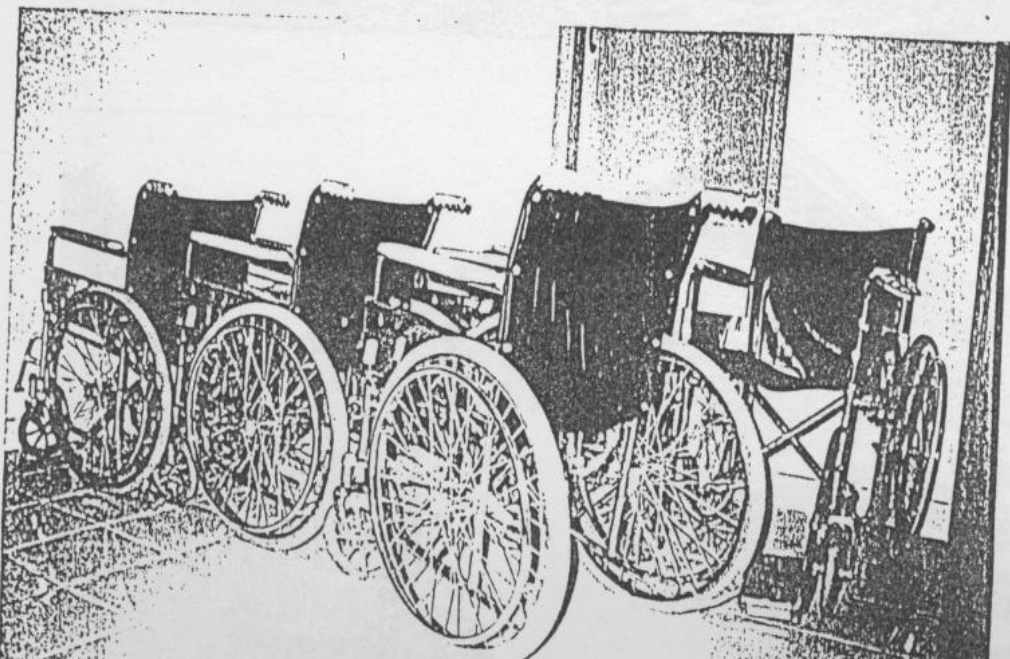
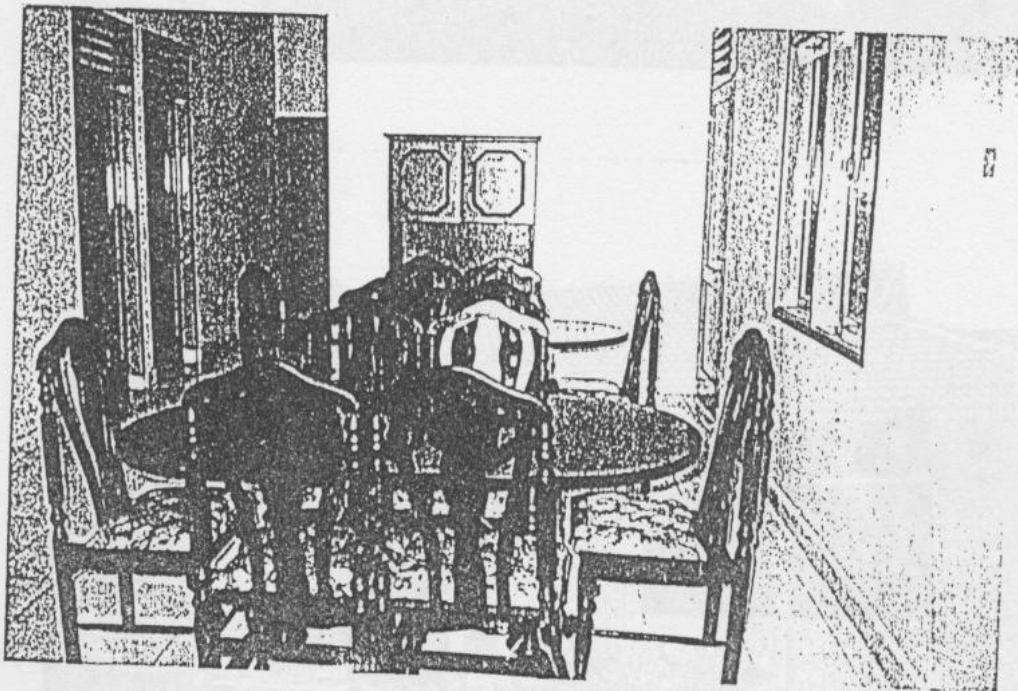
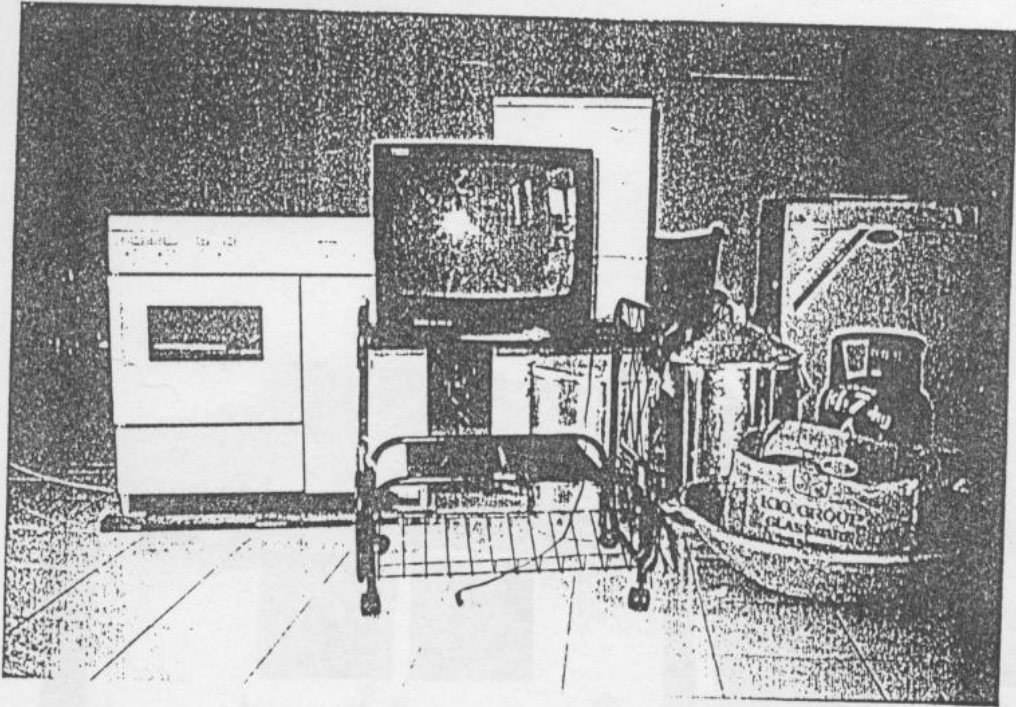
PERALATAN PSTW " BAHAGIA " JAWA TIMUR



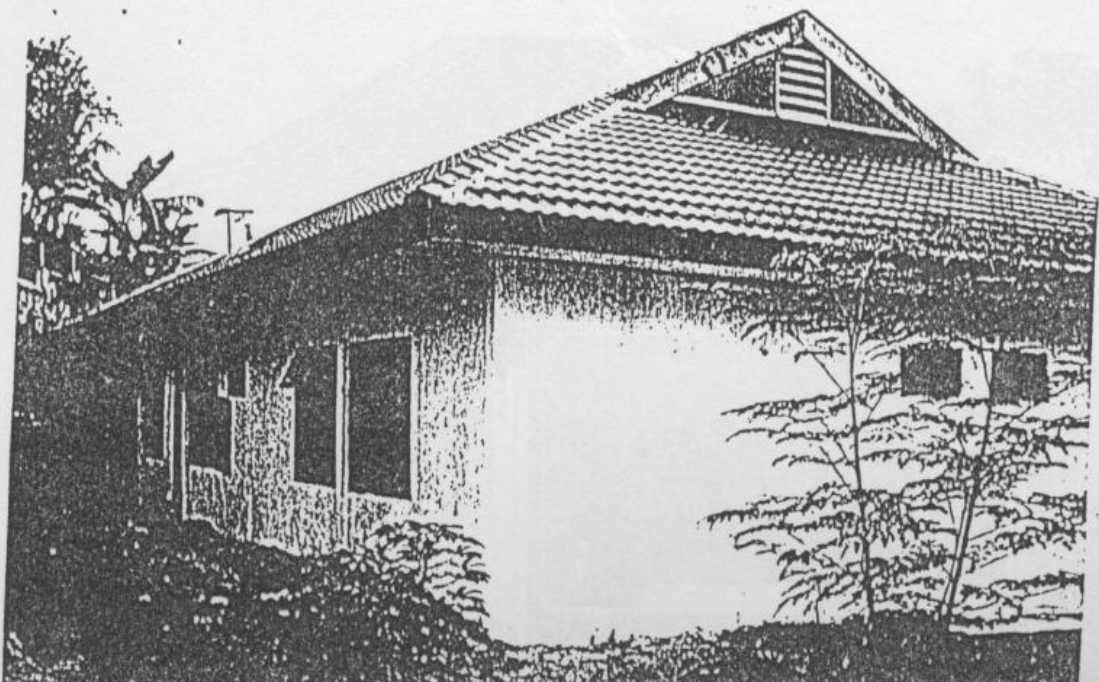
PSTW "ARDI" SUMATERA UTARA



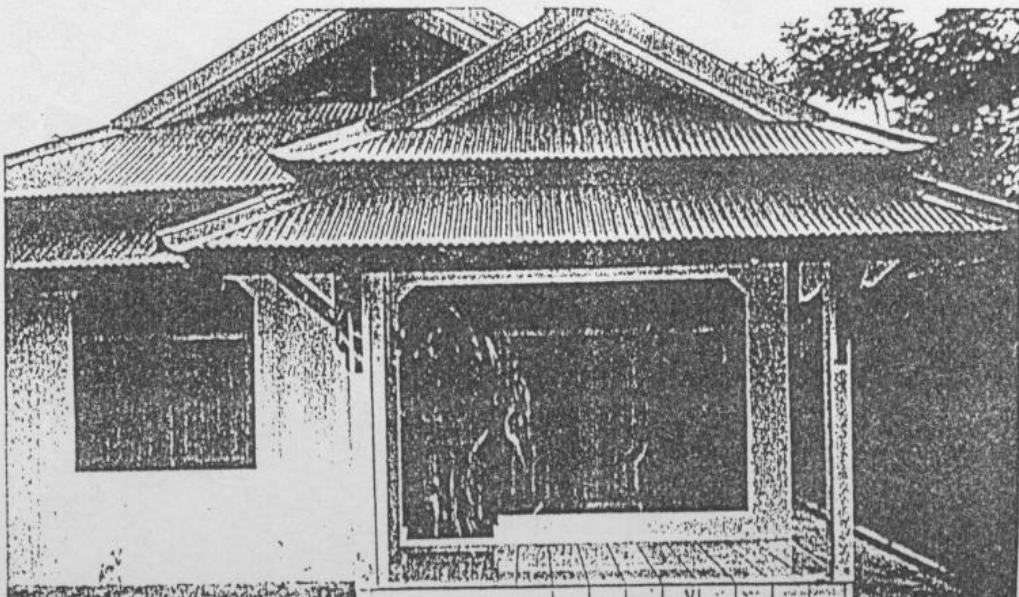
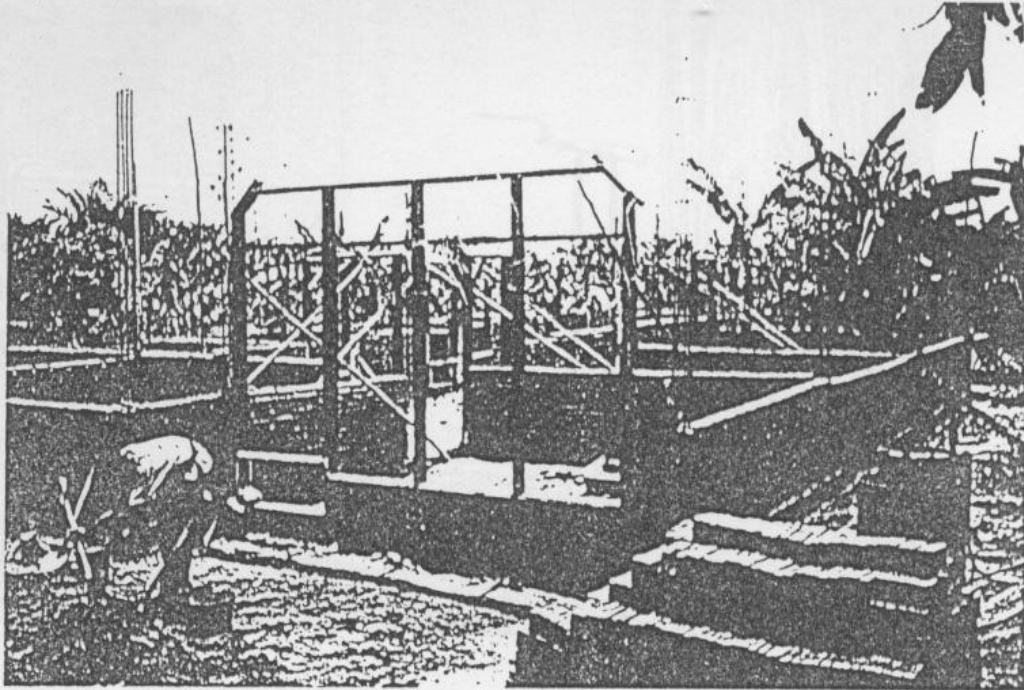
PERALATAN PSTW " ABDI " SUMATERA UTARA .



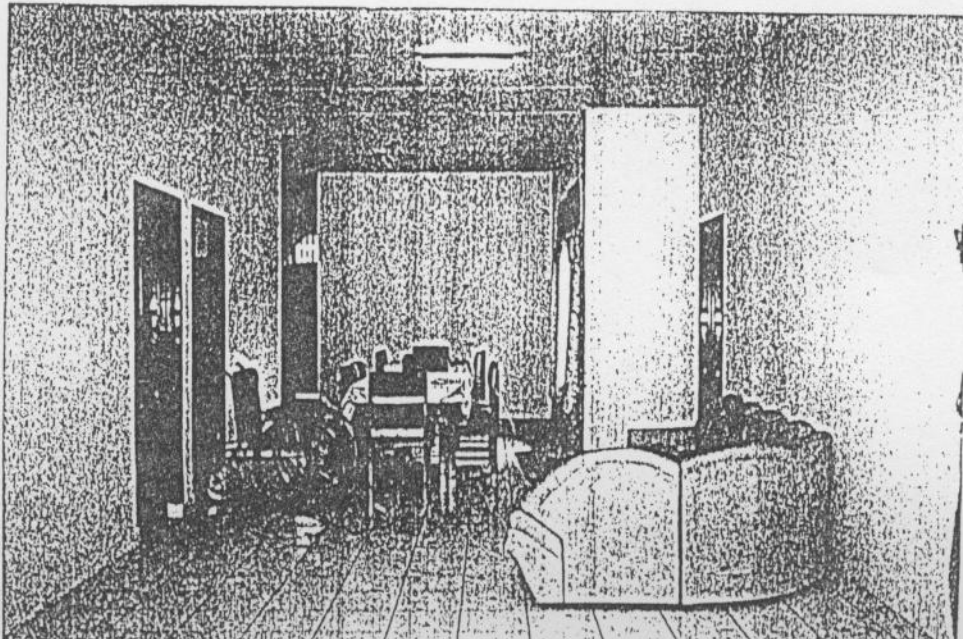
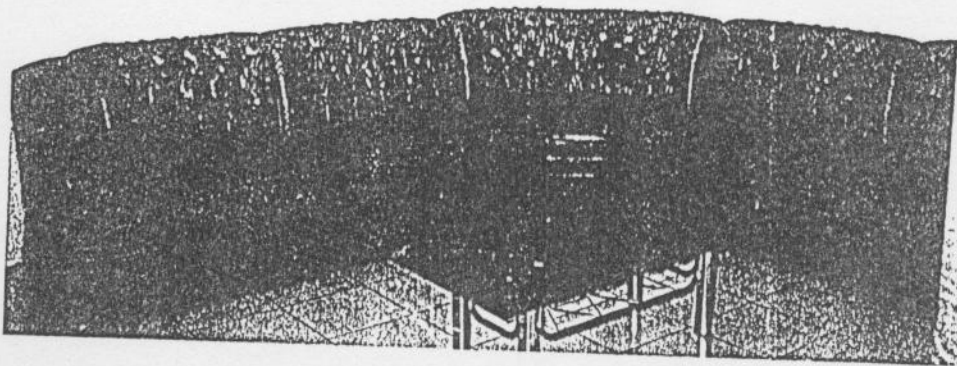
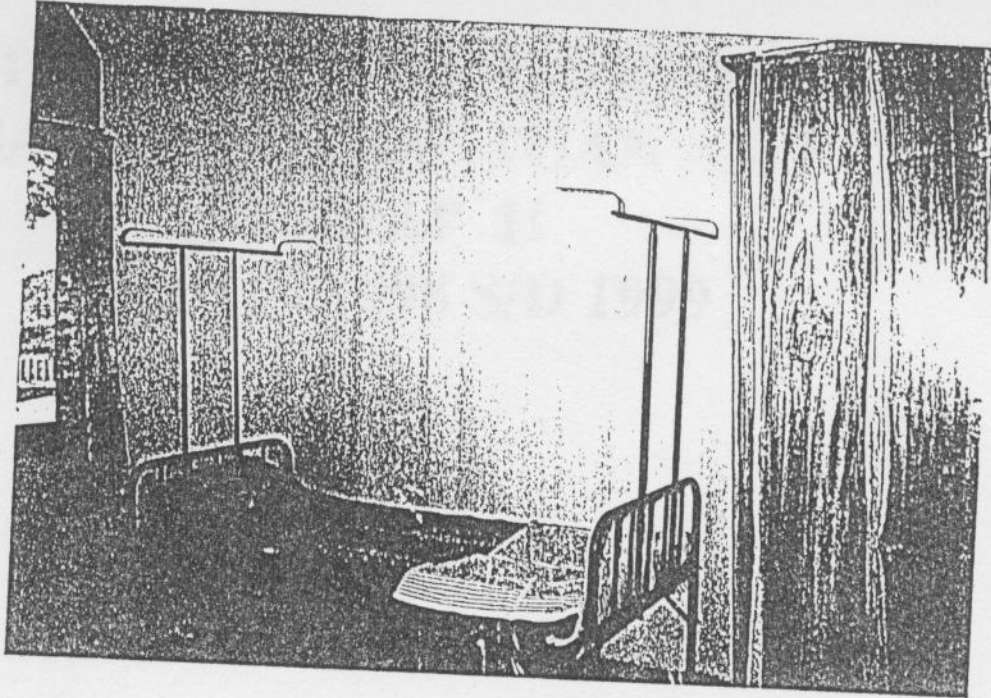
PSTW "MAPAKA SUNGGU" SULAWESI SELATAN



PSTW "MINAULA" SULAWESI TENGGARA



PERALATAN PSTW " MINAULA " SULAWESI TENGGARA



**LAMPIRAN FOTO – FOTO
BANGUNAN BANTUAN AWF
TAHAP II
TAHUN 1998 S/D 1999**

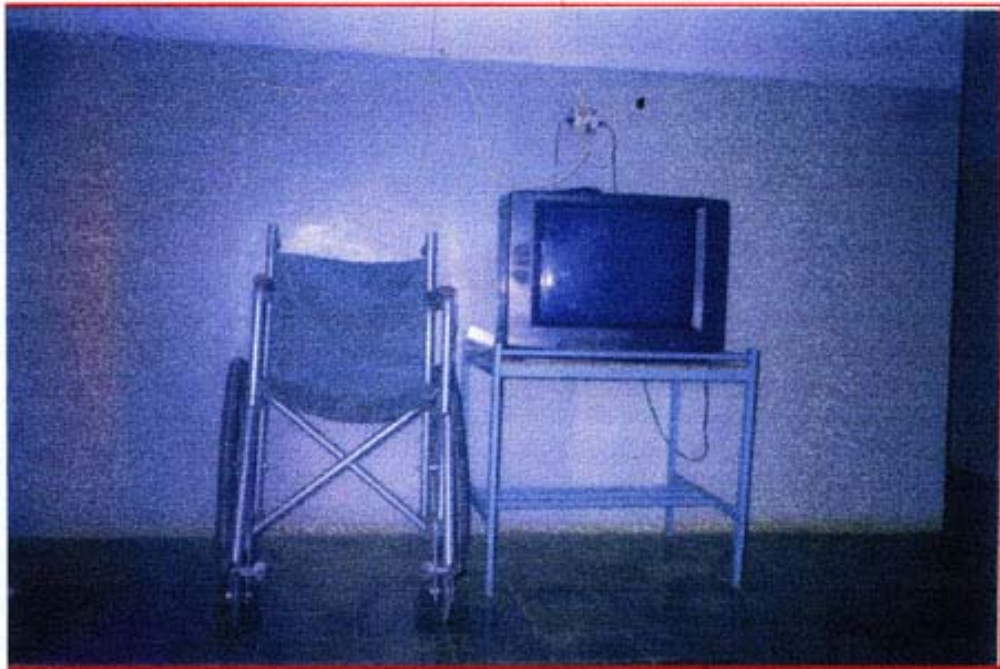


**PSTW USADA MULYA - JAKARTA
PROVINSI DKI JAKARTA**





**PSTW CIPOCOK JAYA - SERANG
PROVINSI BANTEN**





**PSTW JASA IBU
PROVINSI SUMATERA BARAT**





**PSTW WARGATAMA
PROVINSI SUMATERA SELATAN**





**PSTW NIRWANA PURI
PROVINSI KALIMANTAN TIMUR**





**PSTW ABIYOSO
PROVINSI DI. YOGYAKARTA**



**LAMPIRAN FOTO – FOTO
BANGUNAN BANTUAN AWF
TAHAP III-IV
TAHUN 2000 S/D 2001**



**PSTW BUDHI DHARMA - BEKASI
PROVINSI JAWA BARAT**





**PSTW BUDHI DAYA - KERAWANG
PROVINSI JAWA BARAT**





PSTW JIWA BARU - GARUT
PROVINSI JAWA BARAT





**PSTW DHARMA BHAKTI - SURAKARTA
PROVINSI JAWA TENGAH**





**PSTW WILOSO WERDHO
PROVINSI JAWA TENGAH**





**PSTW WANA SERAYA
PROVINSI B A L I**





**PSTW MUHAMMADIYAH - PROBOLINGGO
PROVINSI JAWA TIMUR**





**PSTW BUDHI LUHUR – LUBUK LINGGAU
PROVINSI SUMATERA SELATAN**





PSTW BUDI AGUNG
PROVINSI NUSA TENGGARA TIMUR





**PSTW SINTA RANGKANG
PROVINSI KALIMANTAN TENGAH**



**LAMPIRAN FOTO – FOTO
BANGUNAN BANTUAN AWF
TAHAP V-VI
TAHUN 2003 S/D 2004**



**PSTW KASIH IBU
PROVINSI JAWA BARAT**





**PSTW HIDAYATULLOH
PROVINSI JAWA BARAT**





**PSTW. WELAS ASIH TASIKMALAYA
PROVINSI JAWA BARAT**



TOILET OF PSTW. WELAS ASIH TASIKMALAYA



**PSTW SILIH ASIH
PROVINSI JAWA BARAT**





**PSTW. AN-NAHLA SUBANG
PROVINSI JAWA BARAT**





**EQUIPMENT FOR PSTW TERATAI PALEMBANG
PROVINSI SUMATERA SELATAN**



**EQUIPMENT FOR PSTW PUSPA KARMA MATARAM
PROVINSI NUSA TENGGARA BARAT**



**PSTW AZZAKARIYAH
PROVINSI JAMBI**





**PSTW. MARGO MULYO JEMBER
PROVINSI JAWA TIMUR**



EQUIPMENT FOR PSTW. MARGO MULYO



**PSTW MARDI UTOMO
PROVINSI JAWA TIMUR**





**PSTW DEWANATA
PROVINSI JAWA TENGAH**



**PSTW PURBOYUWONO
PROVINSI JAWA TENGAH**





**PSTW SABAI NUN ALUIH
PROVINSI SUMATERA BARAT**





**PSTW SYEKH BURHANUDDIN
PROVINSI SUMATERA BARAT**



**EQUIPMENT FOR PSTW SYEKH BURHANUDDIN
PROVINSI SUMATERA BARAT**



**PSTW TAT TWAM ASI
PROVINSI PAPUA**



**EQUIPMENT FOR PSTW TAT TWAM ASI
PROVINSI PAPUA**



**PSTW BUDHI SEJAHTERA II
PROVINSI :
KALIMATAN SELATAN**



**EQUIPMENT FOR PSTW
BUDI SEJAHTERA II**



**PSTW NIRWANA PURI
PROVINSI :
KALIMATAN TIMUR**



EQUIPMENT FOR PSTW. NIRWANA PURI

**LAMPIRAN FOTO – FOTO
BANGUNAN BANTUAN AWF
TAHAP VII
TAHUN 2005 S/D 2006**





**YAYASAN AL – KAUTSAR PALU
PROVINSI SULAWESI TENGAH**





**PSTW BERINGIN GORONTALO
PROVINSI GORONTALO**





**PSTW PAGAR DEWA
PROVINSI BENGKULU**



**PSTW AMANAH MANNA
PROVINSI BENGKULU**



**PSTW HIMO HIMO TERNATE
PROVINSI MALUKU UTARA**





PSTW GAU MABA'JI GOWA MAKASSAR



**EQUIPMENT FOR PSTW GAU MABAJI GOWA MAKASSAR
PROVINSI SEULAWESI SELATAN**



**PSTW PARE KEDIRI
PROVINSI JAWA TIMUR**



**EQUIPMENT FOR PSTW PARE KEDIRI
PROVINSI JAWA TIMUR**



**PSTW MARDI UTOMO JOMBANG
PROVINSI JAWA TIMUR**



**EQUIPMENT FOR PSTW MARDI UTOMO
PROVINSI JAWA TIMUR**



**PSTW FAMILY BLITAR
PROVINSI JAWA TIMUR**



**EQUIPMENT FOR PSTW FAMILY BLITAR
PROVINSI JAWA TIMUR**



**PSTW WLINGI BLITAR
PROVINSI JAWA TIMUR**



**EQUIPMENT FOR PSTW WLINGI BLITAR
PROVINSI JAWA TIMUR**



**YAYASAN AKHIR BAHAGIA
PASURUAN
PROVINSI JAWA TIMUR**

**Rehabilitasi UPS Bangkalan.
P.MADURA.**





WISMA ANGGREK
Tampak Depan



Tampak Samping

**Panti Sosial Tresna Werdha Pandaan, Pasuruan
Jawa Timur**



**PSTW MAWAR SARON
PROVINSI NUSA TENGGARA TIMUR**

**PSTW PUSPAKARMA
PROVINSI NUSA TENGGARA BARAT**



**RENOVASI WISMA
(TAMPAK SAMPING)**



**RENOVASI WISMA
(TAMPAK DEPAN)**



**PSTW BUDHI DHARMA BEKASI
PROVINSI JAWA BARAT**



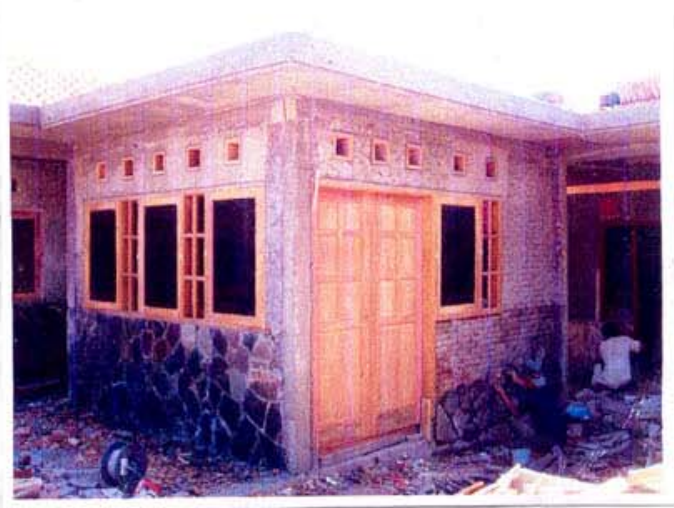
**EQUIPMENT FOR PSTW BUDHI DHARMA BEKASI
PROVINSI JAWA BARAT**



**PSTW. WIJAYA KUSUMA MAJALENGKA
PROVINSI JAWA BARAT**



TOILET OF KUSUMA MAJALENGKA



**YAYASAN AKHIR BAHAGIA
CIMAHI
PROVINSI JAWA BARAT**



**YAYASAN AKHIR BAHAGIA
BOGOR
PROVINSI JAWA BARAT**



**PSTW PAKUTANDANG CIPARAY
PROVINSI JAWA BARAT**





**PSTW CIPOCOK JAYA SERANG
PROVINSI BANTEN**





**YAYASAN PANTI BAITUL IBADAH ACEH TENGGARA
PROVINSI NAGROE ACEH DARUSSALAM**



**YAYASAN AL – HUDA PANTI JOMPO SYUHADA
PROVINSI NANGROE ACEH DARUSSALAM**





**YAYASAN DARUL IHSAN ENGKERAN ACEH TENGGARA
PROVINSI NAGROE ACEH DARUSSALAM**

GAMBAR DOKUMENTASI

**Pembangunan / Renovasi Wisma Panti Sosial
Tresna Wredha "DEWANATA" Cilacap
Kabupaten Cilacap
Jl. Raya Selarang No. 119 - Cilacap**



Kondisi 100% Bangunan Wisma



Kondisi 100% Bangunan Wisma

GAMBAR DOKUMENTASI

**Pembangunan / Renovasi Wisma Panti Sosial
Tresna Wredha "DEWANATA" Cilacap
Kabupaten Cilacap
Jl. Raya Selarang No. 119 - Cilacap**



**Kondisi 0%
Bangunan Wisma (120 m2)**



**Kondisi 10%
Pembongkaran Atap**



**PSTW TERATAI PALEMBANG
PROVINSI SUMATERA SELATAN**



